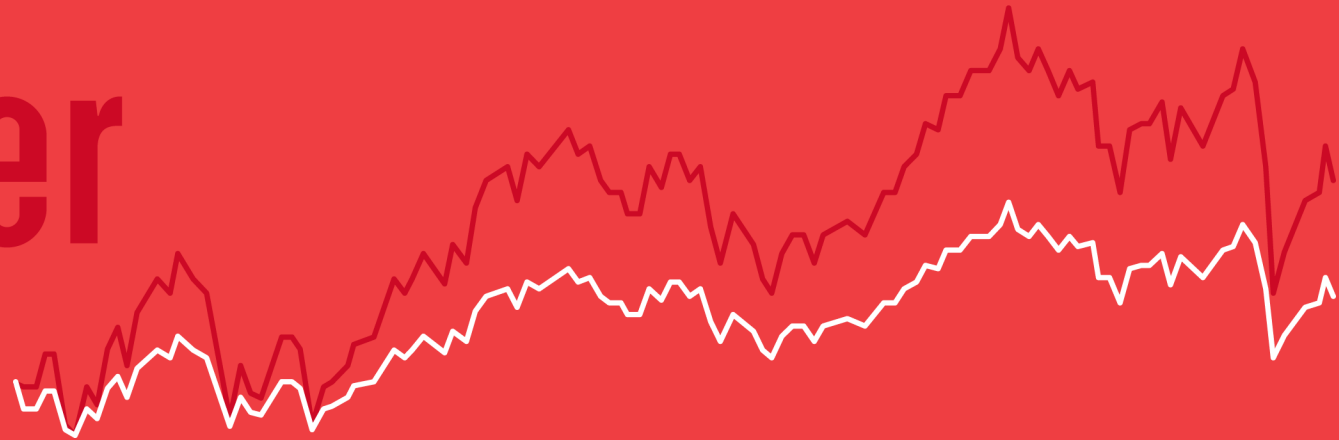




Silver



2026 US Fund Fee Study

Notable fee trends through 2025.



Gold



Bronze



Table of Contents

Executive Summary	3
Trends in Fund Fees Paid by Investors	6
Trends in Fund Fees Charged by the Industry	9
Fund Fees by Investment Vehicle	14
Asset Manager Fee Wars	17
Asset Flows by Fees	20

How Fund Fees Are Shaped by the Economics of Advice	24
The Sustainable Fund ‘Greenium’	28
Strategic-Beta Fees	30
Appendix	32
Methodology	38

Manager Research

Zachary Evens Analyst, Passive Strategies
Brendan McCann Associate Analyst, Passive Strategies

Important Disclosure

The conduct of Morningstar’s analysts is governed by Code of Ethics/Code of Conduct Policy, Personal Security Trading Policy (or an equivalent of), and Investment Research Policy. For information regarding conflicts of interest, please visit: <http://global.morningstar.com/equitydisclosures>

Executive Summary

US Fund Fee Trends

The average expense ratio paid by fund investors in 2025 was less than half of what it was two decades ago. Between 2006 and 2025, the asset-weighted average fee fell to 0.32% from 0.80%. Investors have saved billions in fund fees as a result.

Three factors played a role in lowering fees:

- Investors are increasingly aware of the importance of minimizing investment costs, which has led them to heavily favor low-cost funds.
- Competition among asset managers has led many to cut fees.
- Evolution in the economics of advice has also played a central role. The move toward fee-based models for financial advice has been a key driver of the shift toward low-cost funds, share classes, and fund types—most notably exchange-traded funds.

Fund fees do not follow a straight line down, though. Two factors are behind a shifting competitive landscape:

- Fees of prominent index mutual funds and ETFs are approaching a floor, with many already charging less than 0.05%.
- The emergence of active ETFs and alternative strategies contributes to higher-priced fund launches than previously observed.

Key Takeaways

- We estimate that investors saved nearly USD 6.8 billion in fund expenses last year as the asset-weighted average expense ratio for all US mutual funds and ETFs ticked down to 0.32% in 2025 from 0.34% in 2024.
- The asset-weighted average fee for passive funds fell by 5.4% in 2024 to 0.10%.
- The equal-weighted average fee—which indicates what funds charge irrespective of where assets are held—fell again in 2025. The equal-weighted average fee for all funds declined to 0.92% in 2025 from 0.94% in 2024.
- ETFs are substantially cheaper than mutual funds. Both the equal-weighted and asset-weighted average ETF fee measured at around half of the fee charged by mutual funds, respectively.
- The fee gap between new mutual funds and new ETFs has narrowed for years, but it widened in 2025. A few high-cost mutual fund launches brought the average cost of new mutual funds back above 1% for the first time since 2015. Newly launched ETFs are also more expensive than they used to be, reflecting the proliferation of complex high-cost strategies making their way into the ETF wrapper.
- Vanguard and Schwab are now tied as the lowest-cost provider. Their 0.07% asset-weighted average fee was the lowest among all providers in 2025.
- The gap in flows for cheap and expensive funds remained wide in 2025. The cheapest quintile of funds saw net inflows of USD 694 billion, while the remaining 80% shed USD 244 billion in outflows. This USD 939 billion difference is less than the past year's mammoth USD 1.2 trillion, but it still ranks among the largest gaps in history.
- The economics of advice businesses have evolved, and they are shaping flows and fees. Looking through the lens of Morningstar's service-fee arrangement attribute, bundled share classes have been in outflows for 16 straight years. Fee-based advisors prefer unbundled or semibundled funds as they make room for the price of advice. Unbundled funds have experienced net inflows for the past 20 years.
- Strategic-beta funds are an alternative to more expensive actively managed funds. In 2025, the asset-weighted average fee for strategic-beta funds was 0.16%, higher than the figure for broad index funds (0.09%) but significantly lower than that for actively managed funds (0.57%).

Trends in Fund Fees Paid by Investors

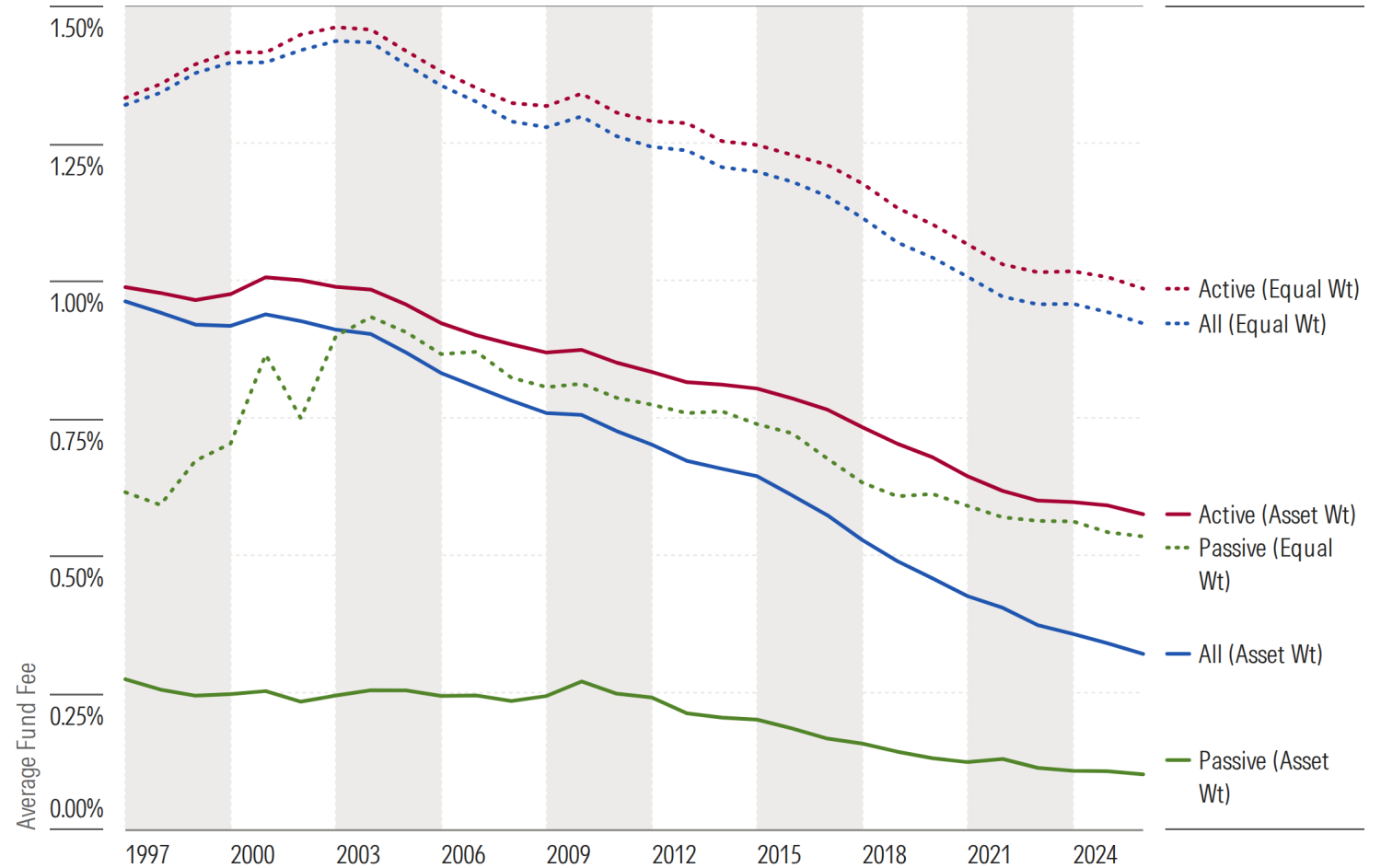
A look at asset-weighted average fund fees.

Fund Fees Decline Again

Investors paid lower fund expenses in 2025 than ever before. Morningstar's database of US open-end mutual funds and ETFs reported the asset-weighted average expense ratio was 0.32% in 2025, a 5.6% decline from 2024.

Investors saved nearly USD 6.8 billion in estimated fund expenses last year. Any fee decline is a big win for investors because fees compound over time and diminish returns.

Exhibit 1 Fund Fees Edge Lower



The Fee Squeeze Continues

Trends in fund expenses paid by investors were examined using the asset-weighted average expense ratio. The asset-weighted average better represents the average costs borne by fund investors than an equal-weighted average because it approximates what investors paid in fees, on average, for the funds they invested in rather than what funds charged, on average. For example, the asset-weighted average expense ratio for active US equity funds was 0.58% in 2025, versus 1.00% when calculating an equal-weighted average for this group. Funds with expense ratios above 1% accounted for a small portion of assets invested in active US equity funds at the end of 2025. The equal-weighted average does not reflect most investors' experience.

Declines in asset-weighted average fees accelerated in 2025. Lower asset-weighted fees are possible, thanks to a combination of inflows into low-cost funds, outflows from more costly ones, fee cuts, and relative underperformance by more-expensive funds. In aggregate, last year's asset-weighted expense ratios for actively managed and passive funds declined 2.7% and 5.4%, respectively, from 2024.

On the passive side, gold's outstanding run in 2025 saw investors rushing to buy relatively inexpensive funds that track the price of gold or the gold industry. This pushed the asset-weighted average fee of the commodities super sector down by over a third from the year before. On the active side, alternative strategies bucked the broader trend of fee declines and saw asset-weighted fee increases in each of the past three years. This reflects both the proliferation of relatively higher-cost alternative funds and instances where investors are willing to pay up for complex products.

Exhibit 2 Investors' Average Fund Costs by Asset-Weighted Average Fees

	Asset-Weighted Average Fees (%)									
	Active					Passive				
	2021	2022	2023	2024	2025	2021	2022	2023	2024	2025
U.S. Equity	0.65	0.63	0.61	0.59	0.58	0.09	0.08	0.08	0.08	0.08
Sector Equity	0.81	0.80	0.81	0.82	0.80	0.27	0.25	0.24	0.23	0.24
International Equity	0.73	0.72	0.70	0.68	0.65	0.18	0.18	0.17	0.16	0.15
Taxable Bond	0.47	0.46	0.47	0.48	0.45	0.09	0.08	0.08	0.08	0.07
Muni Bond	0.46	0.44	0.46	0.48	0.45	0.14	0.13	0.11	0.11	0.09
Allocation	0.61	0.60	0.60	0.59	0.58	0.12	0.11	0.09	0.10	0.11
Alternative	1.35	1.33	1.42	1.49	1.58	0.78	0.78	0.80	0.82	0.79
Commodities	0.75	0.74	0.78	0.74	0.69	0.38	0.41	0.38	0.37	0.25
All Funds	0.62	0.60	0.60	0.59	0.57	0.13	0.11	0.11	0.11	0.10

Exhibit 3 Passive Funds' Average Fees Fell Further Than Active Ones

	Year-Over-Year % Change in Asset-Weighted Average Fees									
	Active					Passive				
	2021	2022	2023	2024	2025	2021	2022	2023	2024	2025
U.S. Equity	-2.9	-3.7	-2.5	-2.8	-1.7	0.0	-5.5	-1.7	-2.8	-1.5
Sector Equity	-1.9	-1.4	1.2	1.8	-3.4	0.1	-6.7	-4.0	-1.6	1.0
International Equity	-3.6	-2.6	-2.6	-3.0	-3.3	0.3	-2.8	-4.0	-4.9	-7.1
Taxable Bond	-11.0	-2.6	2.1	2.0	-5.8	-7.7	-9.3	-3.7	-0.8	-5.5
Muni Bond	-3.1	-3.1	3.2	4.7	-6.2	-6.4	-10.5	-12.4	0.3	-16.2
Allocation	-3.0	-1.5	-0.2	-2.0	-2.3	2.0	-7.9	-21.8	21.1	3.1
Alternative	-9.6	-1.0	6.6	5.0	5.9	-0.5	0.3	3.0	2.1	-3.8
Commodities	-14.5	-0.9	5.1	-5.0	-6.4	0.2	8.3	-7.7	-1.6	-33.8
All Funds	-4.1	-2.9	-0.4	-1.1	-2.7	4.6	-12.6	-4.7	-0.7	-5.4

Trends in Fund Fees Charged by the Industry

A look at equal-weighted average fund fees.

The Fee Battlefield Is Shifting

Trends in equal-weighted average expense ratios represent the changes in fees charged by asset managers, which reflect what the asset-management industry is charging for its funds, regardless of their size. Equal-weighted average expense ratios were calculated for active and passive funds by the Morningstar Category group. The calculations include all share classes of all funds, averaged first to the fund level and then across the US fund universe. Funds of funds and money market funds are excluded.

In recent years, index mutual funds and ETFs have experienced significant fee pressure. Most notably, providers of broad market index funds have been engaged in what has been dubbed a "fee war." In September 2018, fee fighting reached what seemed at the time to be its inevitable conclusion when Fidelity launched its lineup of zero-fee index mutual funds. More recently, other asset managers have followed suit. As fees for these funds sit either at or near-zero, it is inevitable that the pace of fee reductions will slow, prompting asset managers to look elsewhere for profits.

Fee competition has not slowed down despite many of the largest funds charging near-zero. Asset managers have looked to relatively more complex products like active ETFs and alternative strategies to supplement revenue. So, while cheap index funds may not be able to get much cheaper, higher-cost funds may have more room to cut expenses. For example, several asset managers launched active ETFs that significantly undercut existing offerings in 2025. The fee battlefield has shifted, though, away from commoditized asset classes and toward relatively newer and more complex investment strategies and funds.

Exhibit 4 Fund Fees Charged by Asset Managers by Equal-Weighted Fees

	Equal-Weighted Average Fees (%)									
	Active					Passive				
	2021	2022	2023	2024	2025	2021	2022	2023	2024	2025
U.S. Equity	1.04	1.03	1.04	1.02	1.00	0.46	0.45	0.44	0.42	0.40
Sector Equity	1.26	1.23	1.26	1.30	1.23	0.46	0.47	0.47	0.46	0.47
International Equity	1.16	1.14	1.12	1.11	1.09	0.46	0.48	0.46	0.44	0.43
Taxable Bond	0.83	0.82	0.83	0.82	0.80	0.22	0.20	0.20	0.18	0.18
Muni Bond	0.78	0.77	0.78	0.77	0.75	0.21	0.21	0.20	0.19	0.18
Allocation	1.06	1.07	1.07	1.06	1.03	0.90	1.01	1.07	1.07	1.04
Alternative	1.72	1.68	1.68	1.77	1.93	0.85	0.78	0.79	0.80	0.78
Commodities	1.15	1.11	1.16	1.10	1.03	0.84	0.74	0.73	0.66	0.83
All Funds	1.03	1.01	1.02	1.01	0.98	0.57	0.56	0.56	0.54	0.53

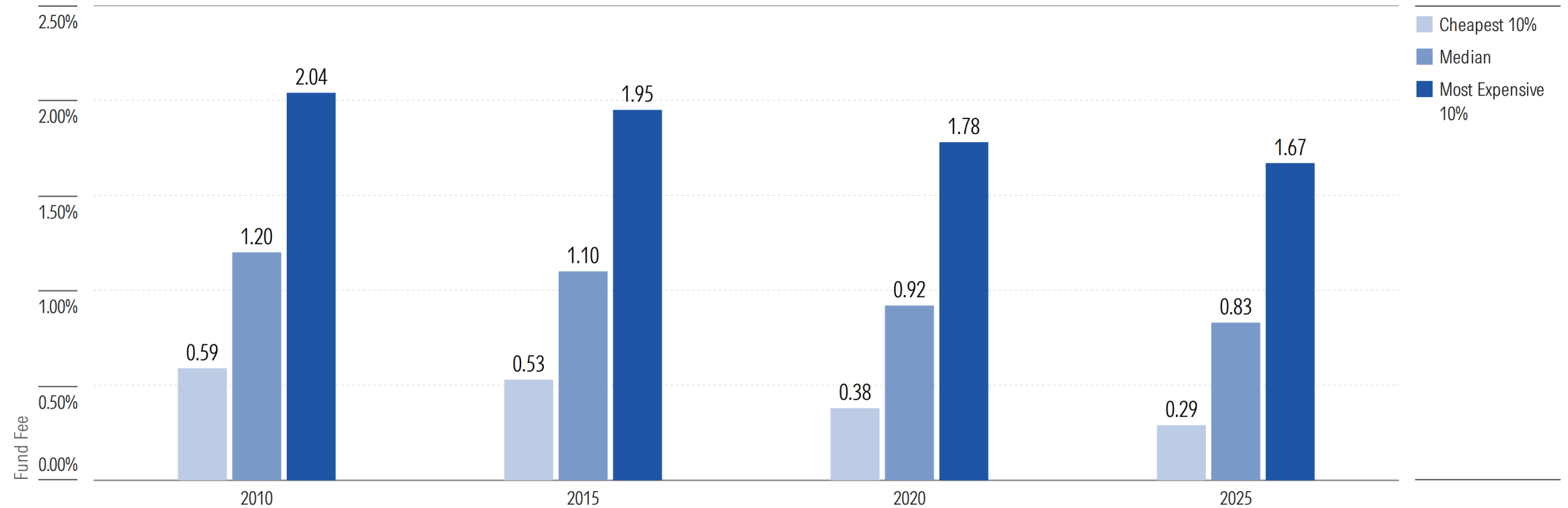
Exhibit 5 Pace of Fee Decreases Slows Across Most Category Groups

	Year-Over-Year % Change in Equal-Weighted Average Fees									
	Active					Passive				
	2021	2022	2023	2024	2025	2021	2022	2023	2024	2025
U.S. Equity	-3.0	-0.8	0.3	-2.0	-1.8	-2.6	-1.9	-2.5	-3.4	-4.3
Sector Equity	-2.8	-2.2	2.5	3.0	-5.0	-3.1	1.6	0.4	-1.4	0.3
International Equity	-2.8	-1.3	-1.7	-0.9	-1.9	-6.3	4.2	-3.8	-3.5	-2.3
Taxable Bond	-4.3	-1.7	1.6	-1.5	-2.4	-6.0	-8.7	-2.3	-5.7	-2.3
Muni Bond	-2.7	-2.0	1.7	-1.4	-2.1	0.4	-1.6	-2.2	-4.7	-9.2
Allocation	-1.5	0.3	-0.1	-0.6	-3.2	2.1	11.9	6.5	-0.4	-2.4
Alternative	-2.9	-2.1	-0.2	5.2	9.2	-27.9	-7.7	0.3	1.5	-1.8
Commodities	-7.7	-3.4	3.9	-4.8	-6.1	9.4	-12.2	-1.4	-9.7	26.8
All Funds	-3.4	-1.4	0.2	-1.1	-2.1	-3.5	-1.1	-0.2	-3.5	-1.4

Cheap Funds Are Getting Cheaper. Expensive Ones Are Too, But at a Slower Pace

Cheap funds have gotten significantly cheaper. The cheapest 10% of all funds cut their fees in half over the past 15 years, while the rest struggled to keep pace. The median fund's fee came down 31% during that time, and the priciest decile declined by just 18%. As the rate of decline slows for the cheapest of the cheap, the gap between the most expensive and least expensive funds could eventually converge.

Exhibit 6 Fees Continue to Fall Across the Fund Landscape



Blend is Cheaper Than Value and Growth

Among US stock funds, the border separating the cheapest from the rest has fallen the furthest among large-, mid-, and small-blend funds. These categories have seen the greatest impact from low-cost index funds and ETFs. Growth and value funds remain relatively expensive on average, as pricier active funds hold a larger proportion of assets in these areas.

Exhibit 7 The Lines Between Cheap and Expensive Across the US Equity Morningstar Style Box

2010				2015				2020				2025			
	Value	Blend	Growth	Value	Blend	Growth	Value	Blend	Growth	Value	Blend	Growth	Value	Blend	Growth
Large	0.68	0.45	0.75	0.57	0.35	0.67	0.37	0.18	0.49	0.33	0.14	0.43	0.33	0.14	0.43
	1.18	1.14	1.25	1.03	1.00	1.11	0.86	0.76	0.92	0.76	0.68	0.82	0.76	0.68	0.82
	1.94	1.97	2.05	1.81	1.82	1.90	1.67	1.61	1.75	1.58	1.40	1.64	1.58	1.40	1.64
Mid	0.80	0.51	0.85	0.69	0.27	0.76	0.49	0.19	0.64	0.35	0.16	0.62	0.35	0.16	0.62
	1.25	1.25	1.33	1.16	1.14	1.21	0.98	0.95	1.04	0.87	0.83	0.96	0.87	0.83	0.96
	2.02	2.09	2.12	1.92	1.93	1.97	1.78	1.75	1.79	1.70	1.58	1.77	1.70	1.58	1.77
Small	0.90	0.73	0.98	0.73	0.63	0.85	0.65	0.35	0.76	0.45	0.25	0.75	0.45	0.25	0.75
	1.37	1.34	1.42	1.25	1.23	1.27	1.10	1.01	1.13	1.01	0.95	1.06	1.01	0.95	1.06
	2.12	2.15	2.21	2.00	1.94	2.02	1.93	1.79	1.93	1.84	1.74	1.83	1.84	1.74	1.83

Legend	
Cheapest 10%	
Median	
Most Expensive 10%	

Fee Cuts Accelerate Again

The fact that fees have been reduced to either nothing or next to nothing among broad-market index funds is only natural. Given these funds' commoditylike nature, it seems inevitable that their prices would be pushed down to the marginal cost of managing them, and that assets would consolidate in the hands of a few large-scale manufacturers. Still, the persistence of fee cuts suggests there's still room for fees to come down elsewhere.

The percentage of actively managed funds that reported lower annual expenses increased to 37% in 2025 from 35% in 2024. Only 24% of passive funds cut their fee in 2025, also up slightly from 21% in 2024.

Meanwhile, fee increases were reported by 21% of active funds and 11% of passive funds, both at a similar rate from the year before. The year 2023 was the first time increases outpaced decreases since 2019. Fees were higher that year for several possible reasons, such as fee hikes, expired waivers, assets under management declines below fee breakpoints stemming from outflows or underperformance, and fund accounting anomalies. Since then, the balance has shifted to asset managers again favoring fee cuts to fee hikes.

Exhibit 8 Active Funds Have Been More Likely to Cut Fees in Recent Years

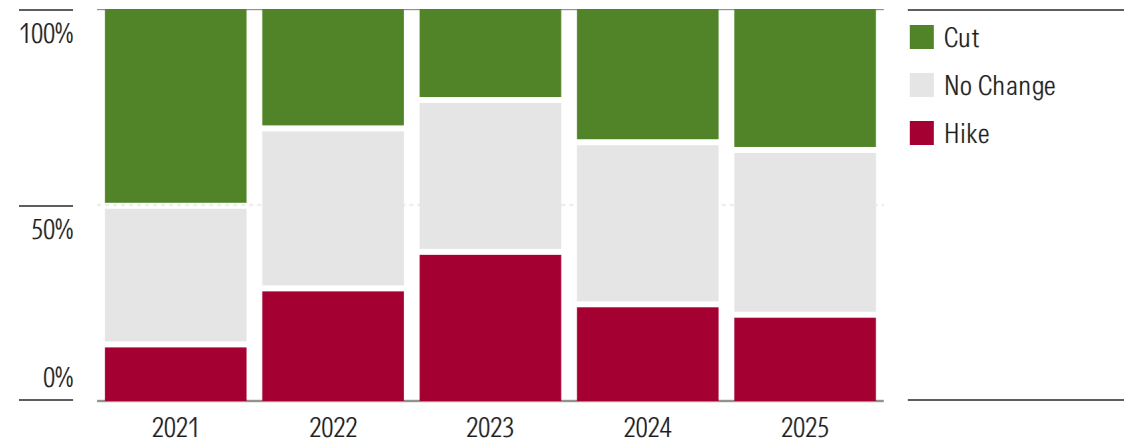
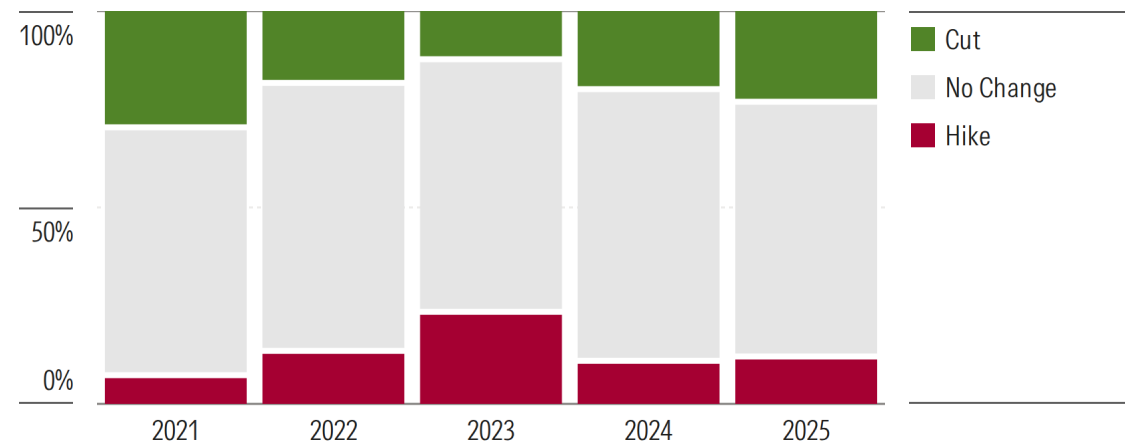


Exhibit 9 Passive Funds Have Been Less Likely to Cut Fees in Recent Years



Fund Fees by Investment Vehicle

How fees differ between mutual funds and ETFs.

ETFs Are Cheaper, But Higher-Cost Launches Are Universal

Both the equal-weighted and asset-weighted average ETF fee measured around half the fee charged by mutual funds, respectively. Though, the gap has narrowed over time as mutual funds continue cutting and relatively expensive ETFs proliferate.

The average fee of new ETFs and new mutual funds both rose significantly in 2025, with the average cost of each new fund measuring higher than at any point in the past 10 years. More complicated and expensive strategies are behind this step up.

Exhibit 10 Average ETF and Mutual Fund Fees

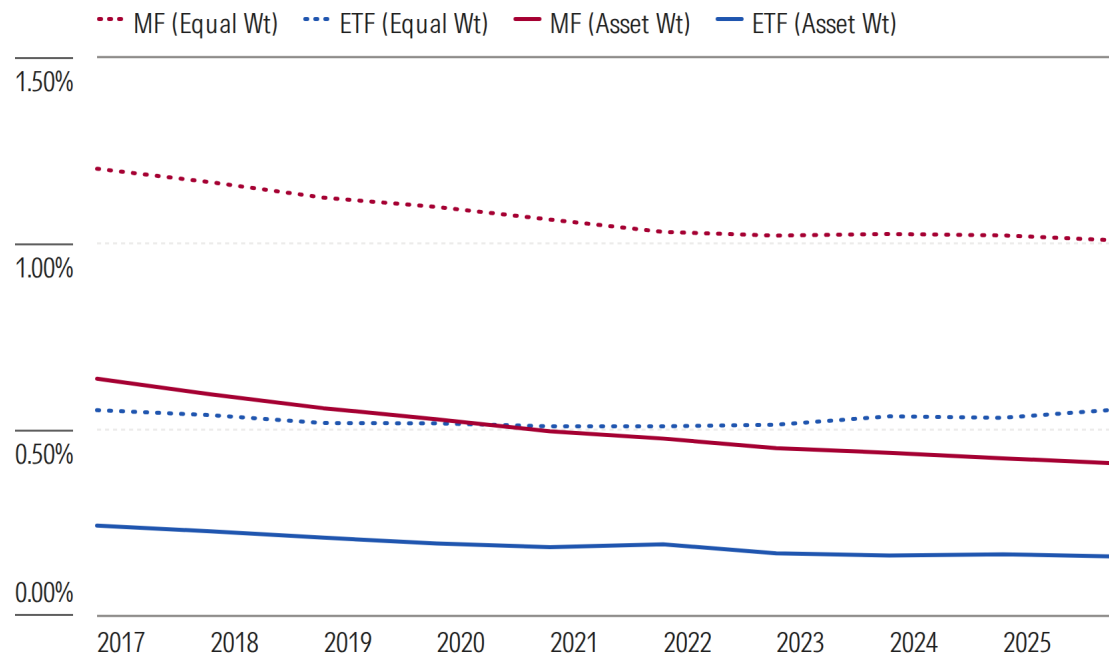
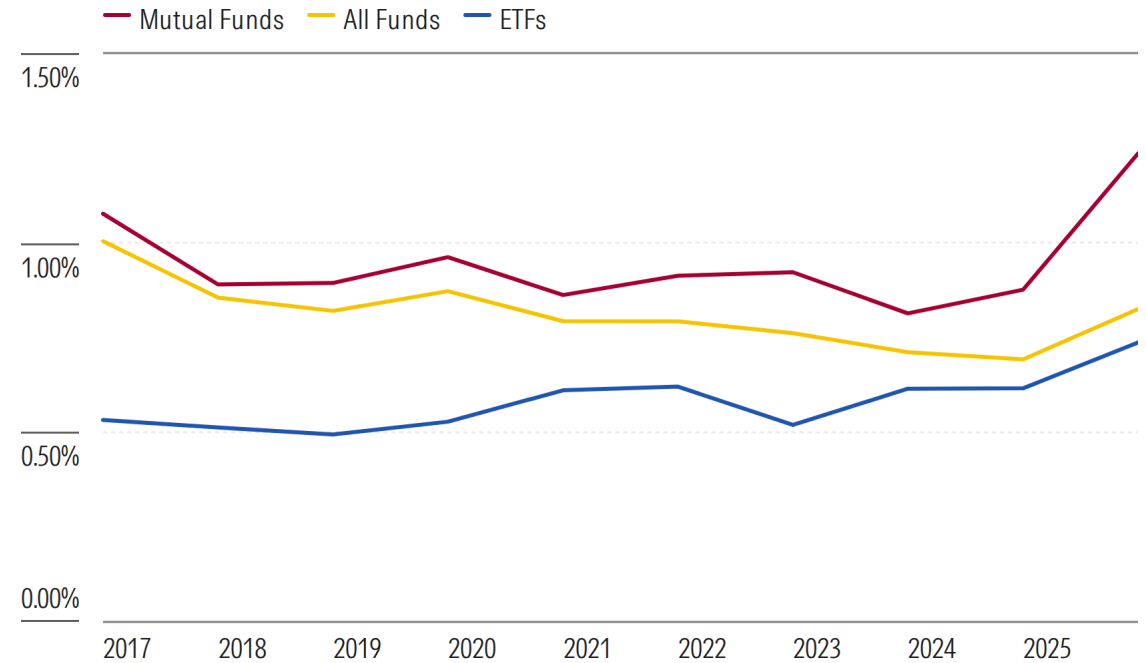


Exhibit 11 Equal-Weighted Average Fee of New Funds



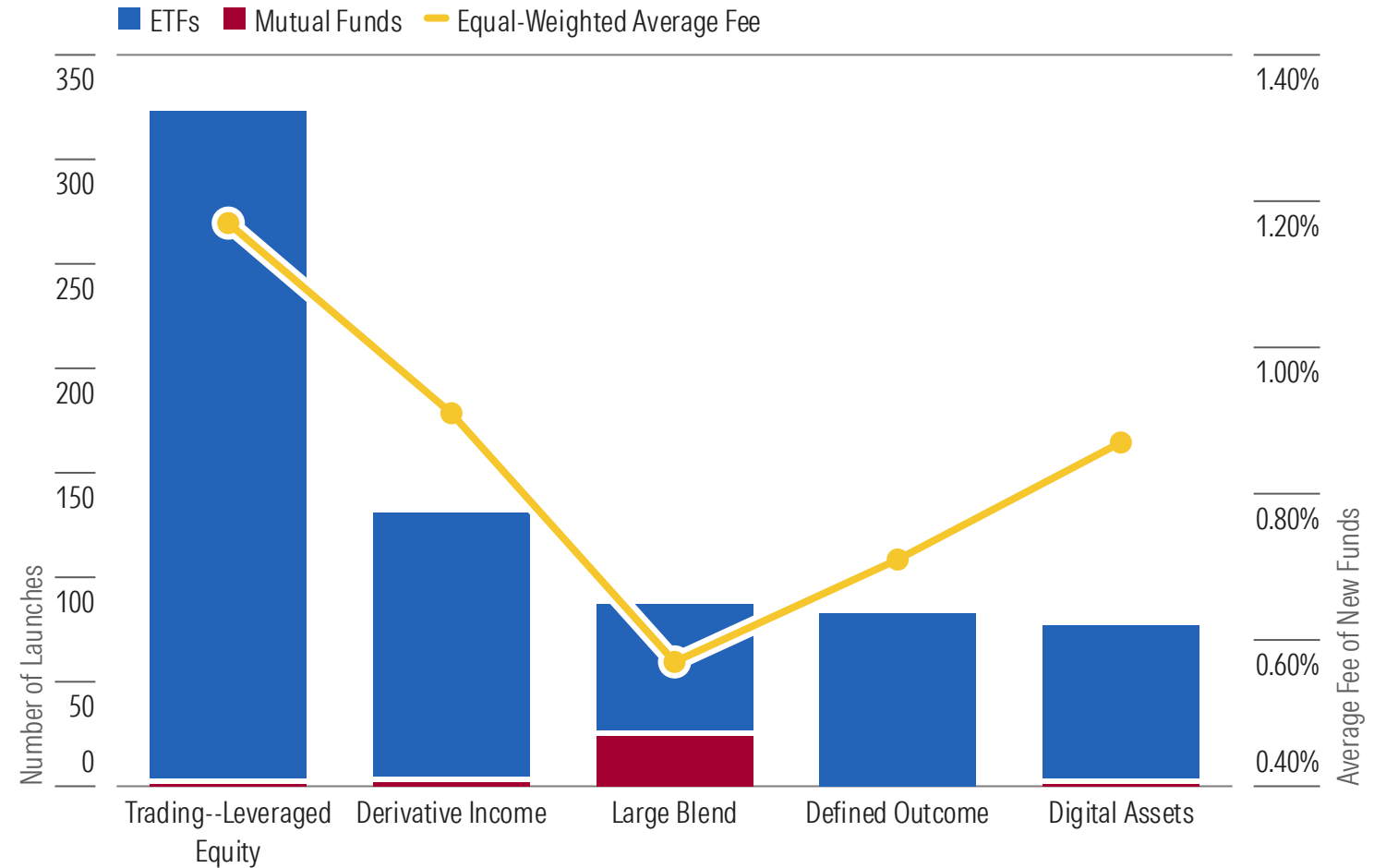
Expensive Funds Dominated Launches in 2025

The trading—leveraged equity category saw the most fund launches in 2025 by a long shot. Of the 1,538 fund launches, one in five occurred in this category. All but one of those were ETFs. These funds tend to charge higher fees than more traditional, diversified stock or bond funds, and they are generally not meant for long-term investors.

Trading—leveraged equity fund launches in 2025 charged an average fee of 1.17%. That's roughly double of what new funds in more traditional categories, like large blend, charged.

As fees and profits get squeezed, the proliferation of higher cost offerings is only natural. Categories like trading—leveraged equity, derivative income, defined outcome, and digital assets have not seen major fee compression yet, enabling greater profits for the companies that launch them. While the strategies may be useful to some investors in specific circumstances, the cost of ownership should be weighed against the outcome delivered.

Exhibit 12 Top Five Morningstar Categories by 2025 Fund Launches



Asset Manager Fee Wars

How firms compete.

Fees Stagnate Among the Cheapest Providers, Fall Among the Priciest

Equal-weighted average fees show the general price level of the funds offered by each firm. Predominantly active shops tend to charge the most, passive the least. However, Dimensional's systematic active offerings rank comfortably among the cheapest predominantly passive asset managers.

An asset manager's asset-weighted average fee provides an accurate representation of the typical investor experience in its funds. Vanguard and Charles Schwab investors paid the lowest fee in 2025, with index fund champions State Street and iShares close behind.

Exhibit 13 Equal-Weighted Average Fee by Asset Manager

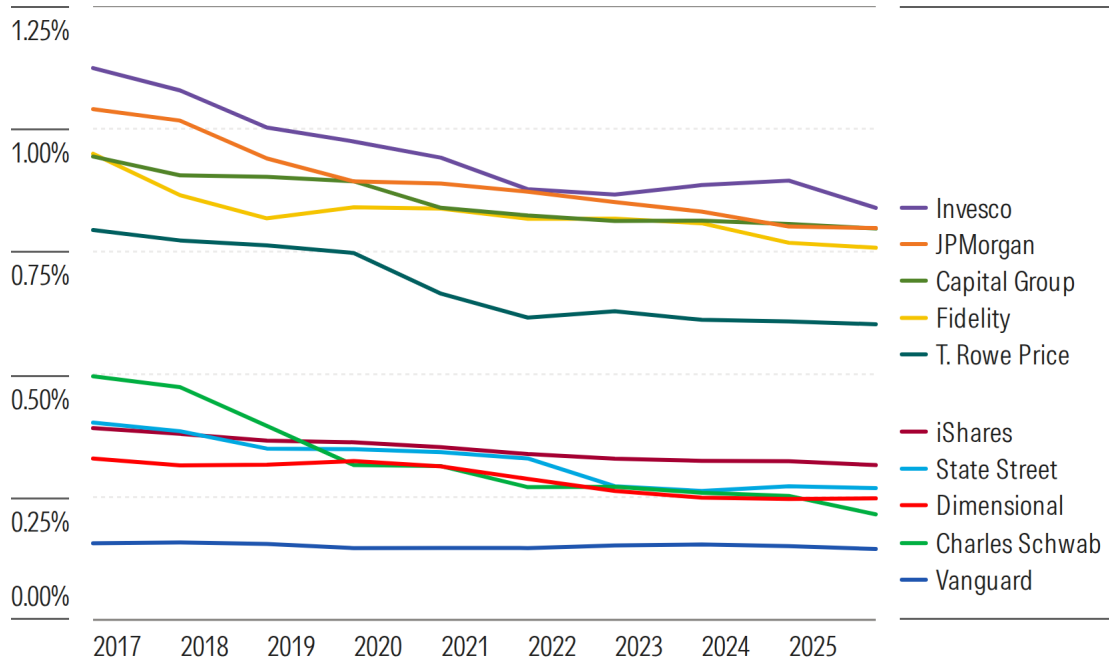
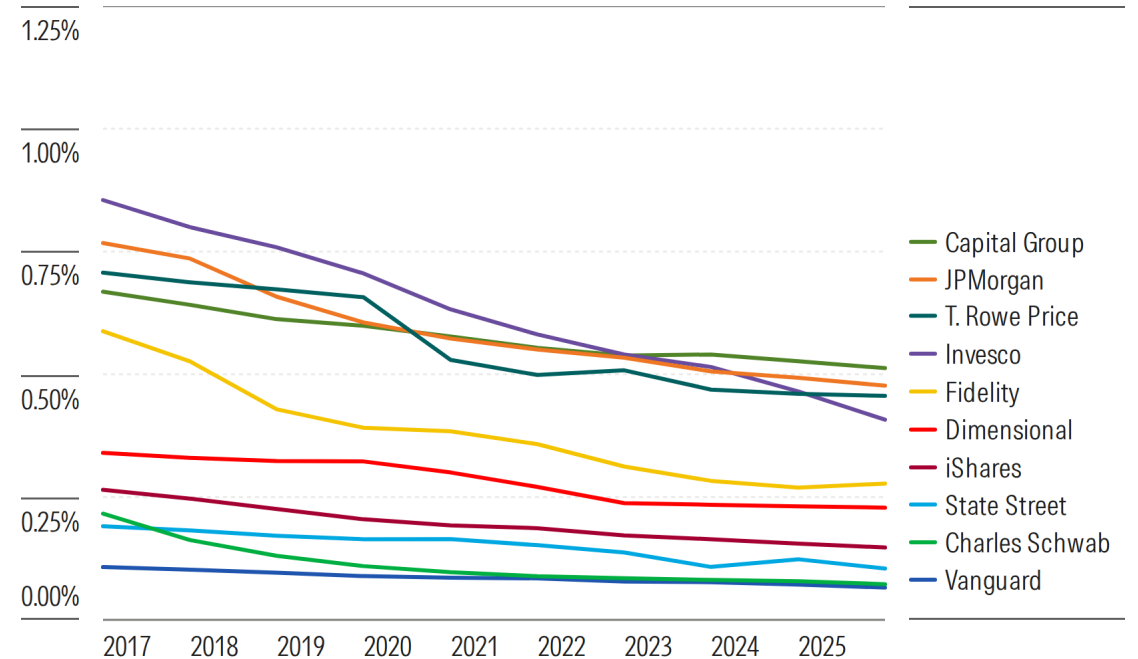


Exhibit 14 Asset-Weighted Average Fee by Asset Manager



Vanguard Has Met Its Match

Vanguard has met its match, at least in terms of fees. The longtime low-cost leader is now tied with Charles Schwab for having the lowest asset-weighted average fee in the US. That fee was just 0.07% in 2025, 3 basis points cheaper than State Street in third place. iShares ranked fourth, reflecting its expansive lineup that includes pricier active and niche strategies alongside its flagship low-cost index funds. As firms compete on cost, investors come out in front, benefiting from an ever-wider menu of cheap funds offering wide market exposure.

Exhibit 15 Fee Competition Among the Largest Asset Managers Is Intense

	Asset-Weighted Average Fees (%)			2025			
	2020	2025	Percent Change	Year End AUM (USD Bil)	Market Share (%)	Asset Growth (%)	Organic Growth Rate (%)
Vanguard	0.09	0.07	-23.46%	9,216	28.6	72.0	13.6
iShares	0.19	0.15	-23.39%	3,418	10.6	100.1	63.9
Fidelity	0.38	0.28	-27.70%	3,188	9.9	81.6	15.0
Capital Group	0.58	0.51	-11.18%	2,592	8.0	46.9	-13.0
State Street	0.16	0.10	-36.43%	1,581	4.9	109.6	46.5
Invesco	0.63	0.41	-35.54%	963	3.0	82.2	27.6
JPMorgan	0.57	0.48	-16.74%	747	2.3	104.2	61.9
T. Rowe Price	0.53	0.46	-13.84%	742	2.3	7.2	-34.4
Charles Schwab	0.10	0.07	-25.11%	673	2.1	152.4	81.2
Dimensional	0.30	0.23	-23.84%	554	1.7	69.5	16.3

Asset Flows by Fees

Do fees drive flows?

Investors Favor Low-Cost Funds and Reject More Costly Ones

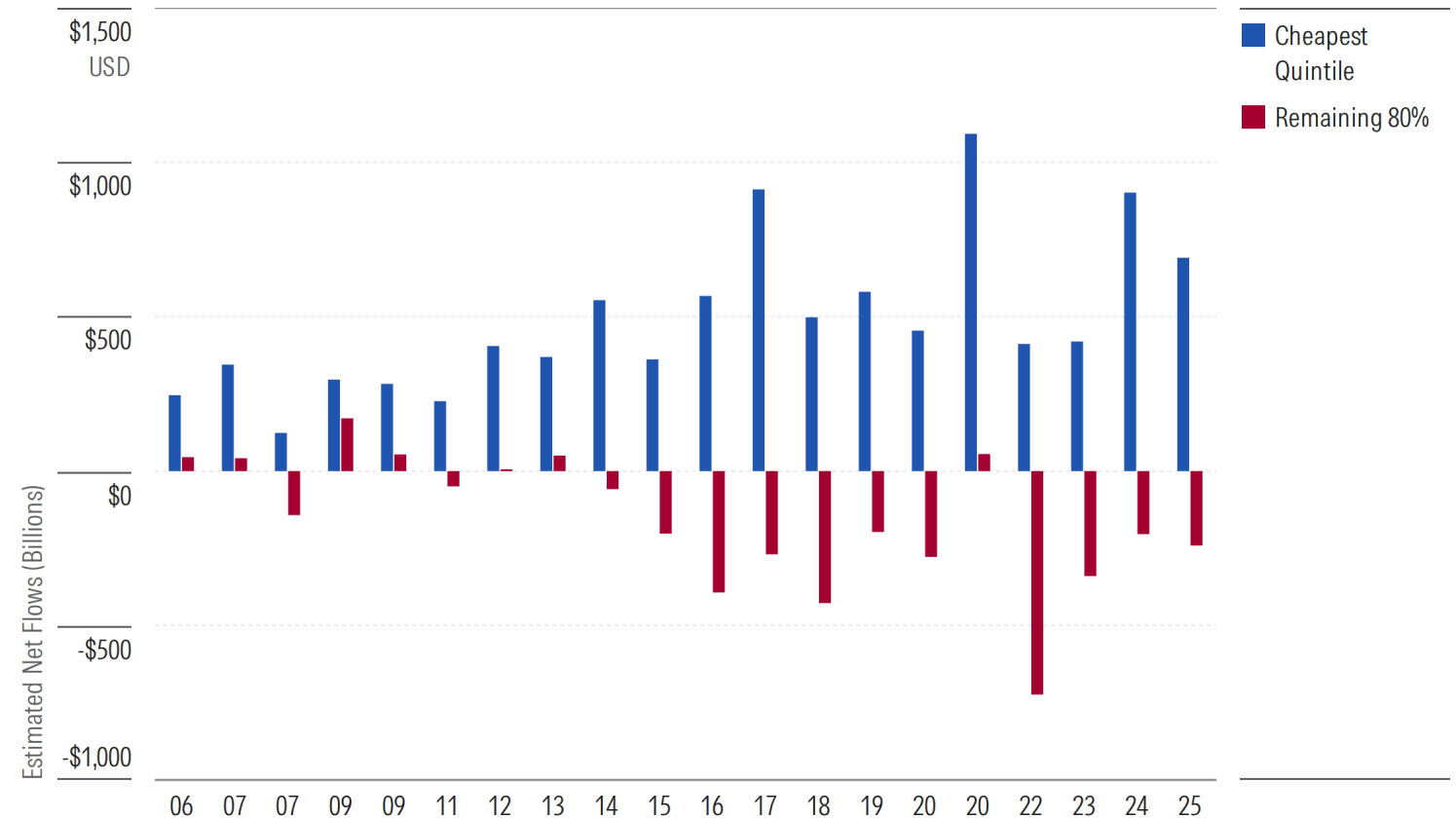
Fund fees drive flows. Since 2000, net flows have trended higher for funds and share classes charging fees that rank within the cheapest 20% of their category group. In 2025, these funds saw net inflows of USD 694 billion.

Flows for the remaining 80% of funds have been negative in 10 of the past 11 years. In 2025, these funds collectively lost USD 244 billion to net outflows.

This USD 939.0 billion difference in flows is quite large, but it's a step below 2024's historic USD 1.2 trillion gap.

Morningstar research has demonstrated that fees are a reliable predictor of future returns. Low-cost funds generally have greater odds of surviving and outperforming their more-expensive peers. It's encouraging to see investors favor such funds.

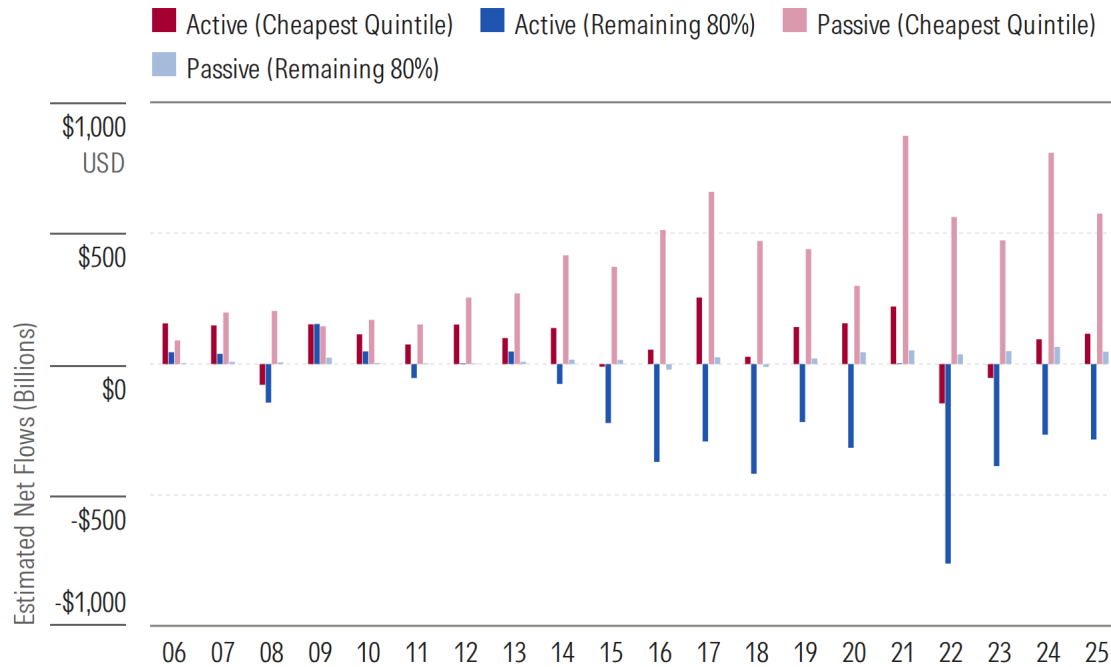
Exhibit 16 Investors Overwhelmingly Prefer Cheap Funds



Money Gravitates Toward Cheap and Passive Funds

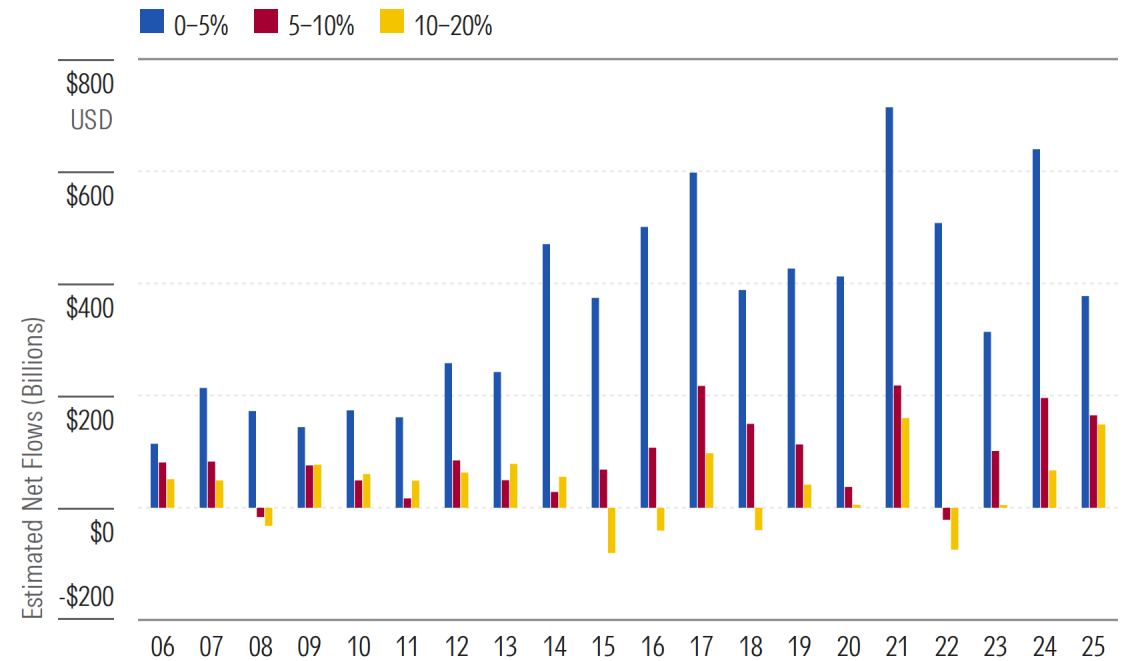
It's not just a price story. Cheap passive funds have garnered most inflows over the past 20 years. Since the start of 2021, the cheapest 20% of passive funds collected roughly USD 3.3 trillion while active funds lost a collective USD 1.5 trillion.

Exhibit 17 Pricey Active Funds Are the Epicenter of Outflows



Regardless of strategy, investors overwhelmingly prefer the cheapest of the cheap. In 2025, USD 545 billion flowed into cheapest 10% of funds, while the next cheapest decile (10%-20%) gathered USD 150 billion.

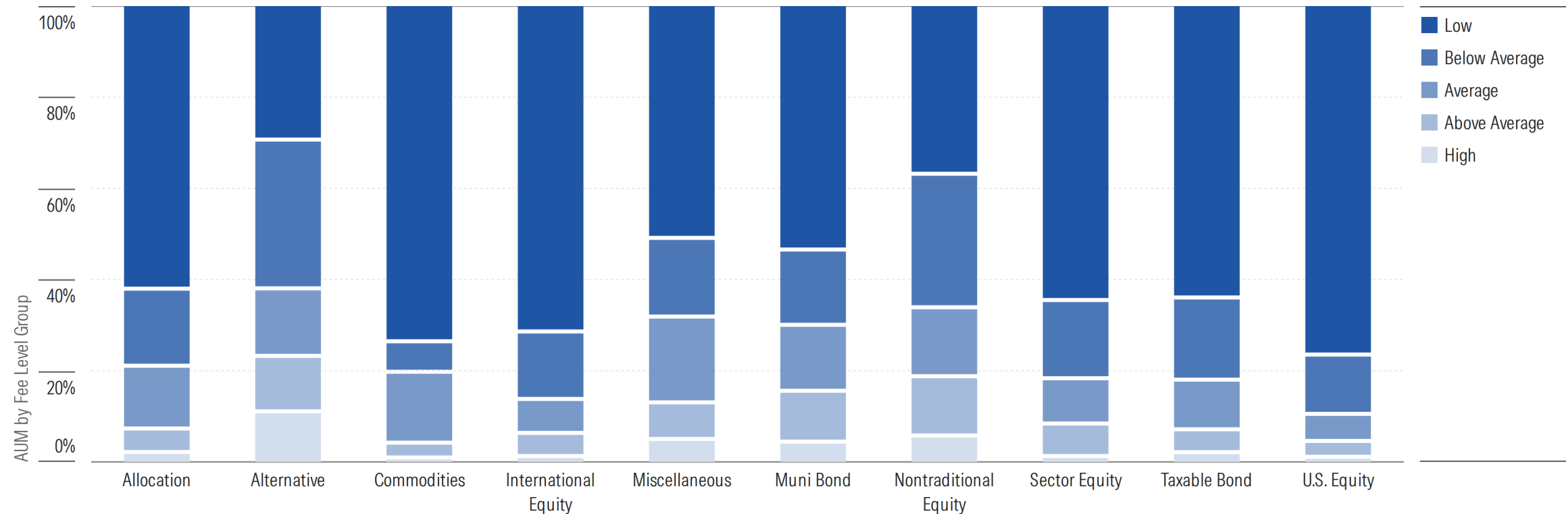
Exhibit 18 Investors Pour Money Into the Cheapest of the Cheap



Investor Dollars Concentrate in the Least-Expensive Funds

Most of investors' money sits in relatively low-cost funds. At the end of 2025, more than half the assets in each category group ranked among the cheapest two quintiles by fee. US equity and commodities showed the strongest concentration in cheap funds, with roughly 77% and 74% of assets, respectively, stowed in the cheapest quintile. Alternative and nontraditional equity were not quite as lopsided. Investors in these categories spread assets more evenly across the cost spectrum—and showed a greater tolerance for higher fees. This reflects the complexity and often short-term nature of those strategies.

Exhibit 19 Most of Investors' Money Is in the Least-Expensive Funds



How Fund Fees Are Shaped by the Economics of Advice

Classifying Service-Fee Arrangements

The economics of the advice business have evolved, and that is shaping flows and, by extension, fees. As advisors move away from transaction-driven compensation models and toward fee-based ones, less costly funds and share classes, those that have fewer—if any—embedded advice and/or distribution costs, are experiencing more inflows.

The service-fee arrangement attribute in Morningstar's US funds database classifies funds based on their service-fee arrangements between asset managers, distributors, advisors, and investors. It aims to help investors discern how they might be paying for advice—either directly to an advisor in the form of a fee or indirectly via the fees they pay for the funds they invest in. In practice, investors might be paying for advice via some combination of the two, but this classification of funds into unbundled, semibundled, and bundled buckets is a useful means of beginning to understand what investors are getting in return for the fund fees.

The definitions of these groups are as follows:

- **Unbundled:** An investor simply pays for investment management and fund operating expenses, and the fund and its advisor do not pay third parties who sell their funds to the public. Unbundled share classes reduce conflicts of interest, but investors still need to ask if they are paying a reasonable amount for advice and for the services that their intermediary charges them for directly.
- **Semibundled:** The fund charges no traditional distribution fees (or 12b-1 fees) or load-sharing but can have revenue-sharing or subtransfer agency fees. Semibundled share classes could create some potential conflicts of interests that investors need to ask about.
- **Bundled:** These are traditional share classes, where the investor pays a load and a 12b-1 fee to the mutual fund, which in turn pays the intermediary. Bundled share classes are purely transactional, which can work well for investors who have done their homework and wish to pay upfront commissions. Advice associated with these share classes may ultimately cost less.

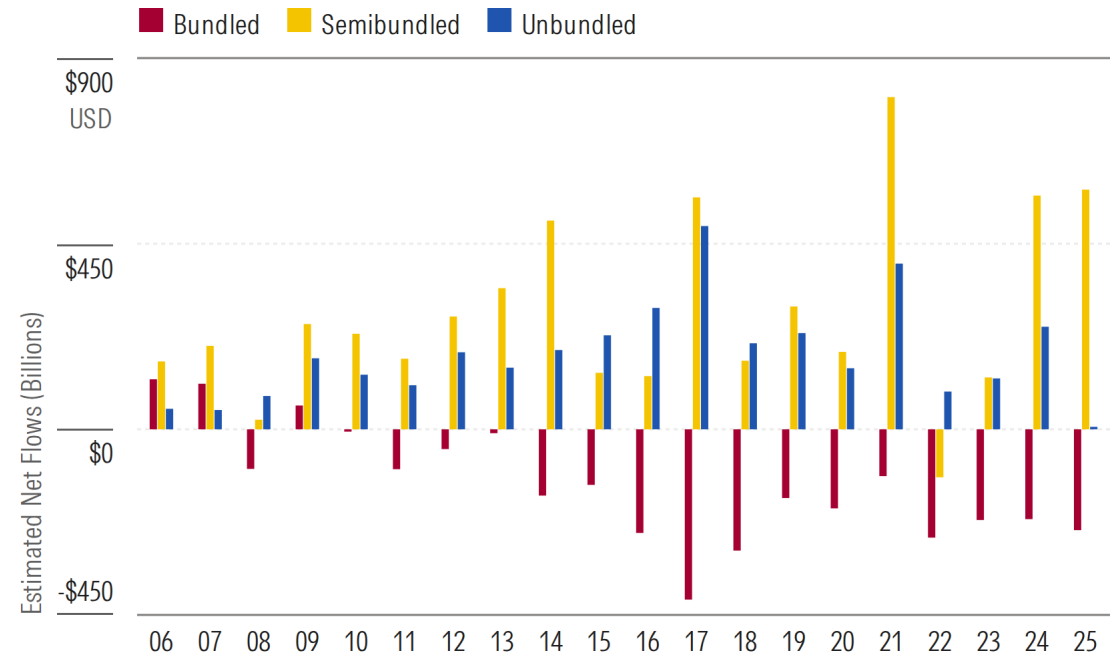
Flows Follow the Transition to Fee-Based Advice Models

Looking through the lens of Morningstar's service-fee arrangement attribute, bundled share classes have been in steady outflows, while semibundled and unbundled share classes have seen mostly steady inflows. This corresponds to the shift away from transaction-driven advice models, which favor load shares, and toward fee-based models. The result is that investment product costs are being displaced by advisor fees.

Exhibit 20 Service-Fee Arrangements

Fee Type	Unbundled	Semibundled	Bundled
Management Fee	✓	✓	✓
Fund Operating Expenses	✓	✓	✓
Subtransfer Agency Fees	✗	✓	✓
Revenue Sharing, Platform, or Other Access Fees	✗	✓	✓
Distribution Fees (12b-1)	✗	✗	✓
Loads and Commissions	✗	✗	✓
Transactions and other Operational Fees	✗	✗	✓
Fees for Advice and Planning	✗	✗	✗

Exhibit 21 Bundled Funds Have Seen Steady Outflows



Fees Fell Across Service-Fee Arrangements, But Not Everywhere

Bundled funds and share classes have been a casualty of the move toward fee-based advice. While they used to account for the most assets of any service-fee arrangement, their market share has dwindled from 42% in 2005 to just 11% at the end of 2025. This highlights a shift in investor’s preferences from transaction-driven advice models to fee-based models. What investors used to pay in fund fees they may now pay in advice fees. Still, this optionality to select how they pay for advice is a benefit and investors are likely still paying less for advice than they used to pay.

All three service-fee arrangements have seen significant asset-weighted average fee declines over the past 20 years. Bundled funds are still the most expensive, as their expense ratio covers much more than just a fund’s management fee and operating expense, but its asset-weighted average total expense still dropped by 26%. Meanwhile, the asset-weighted average fees for semibundled and unbundled funds were more roughly cut in half since 2006. This again highlights greater investor interest in low-cost products.

The trend in equal-weighted fees across these three service-fee arrangements paints a different picture. Equal-weighted average fees for unbundled funds and share classes were higher at the end of 2025 than they were in 2006, while the average fee charged by bundled and semibundled funds ticked gradually lower. This highlights the variety of line items present in the bundled and semibundled cohorts’ expense ratios and how, in the case of many funds and share classes belonging to the semibundled group, they have been gradually stripped out or reduced.

Exhibit 22 Semibundled and Unbundled Hold Most Assets

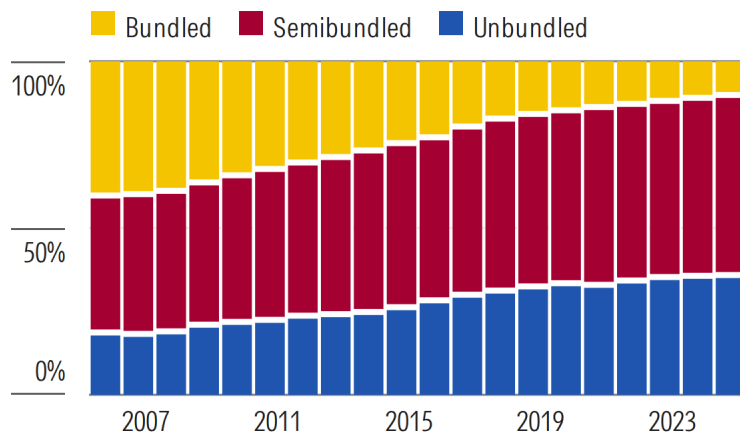


Exhibit 23 Asset-Weighted Fee by Service Arrangement

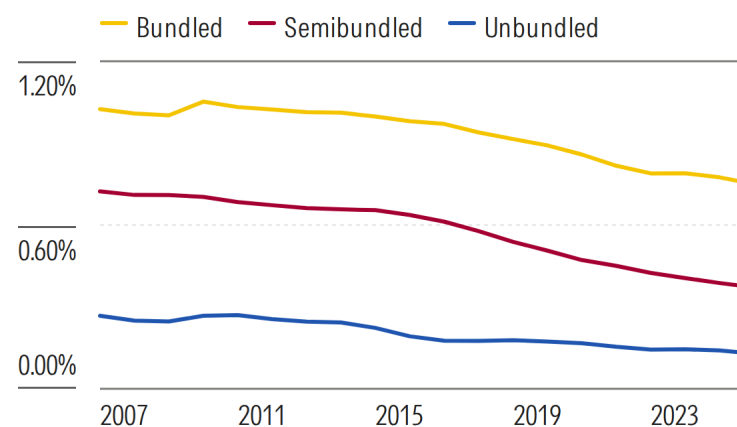
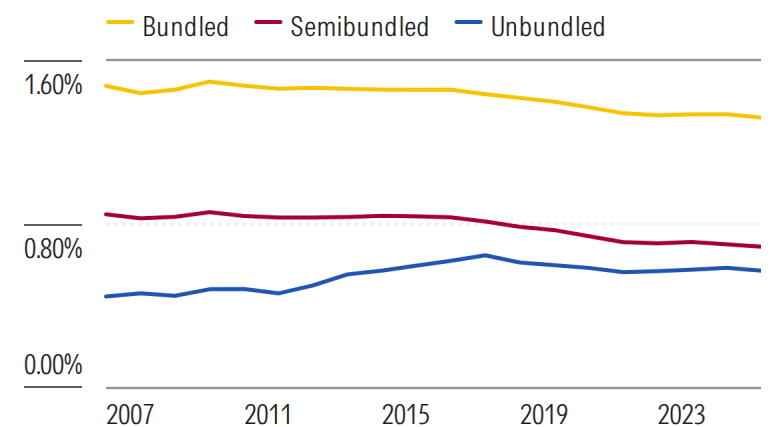


Exhibit 24 Equal-Weighted Fee by Service Arrangement



The Sustainable Fund 'Greenium'

Fund Fees Are Falling, But ESG Investors Still Pay More

Investors in sustainable funds are paying a “greenium” relative to investors in conventional funds. Despite firms on average charging less for their environmental, social, and governance funds than for conventional active or passive funds, an overwhelming preference for cheap conventional funds brings the fee investors actually pay for ESG funds, the asset-weighted average fee, noticeably above their non-ESG peers.

Exhibit 25 Equal-Weighted Average Fee

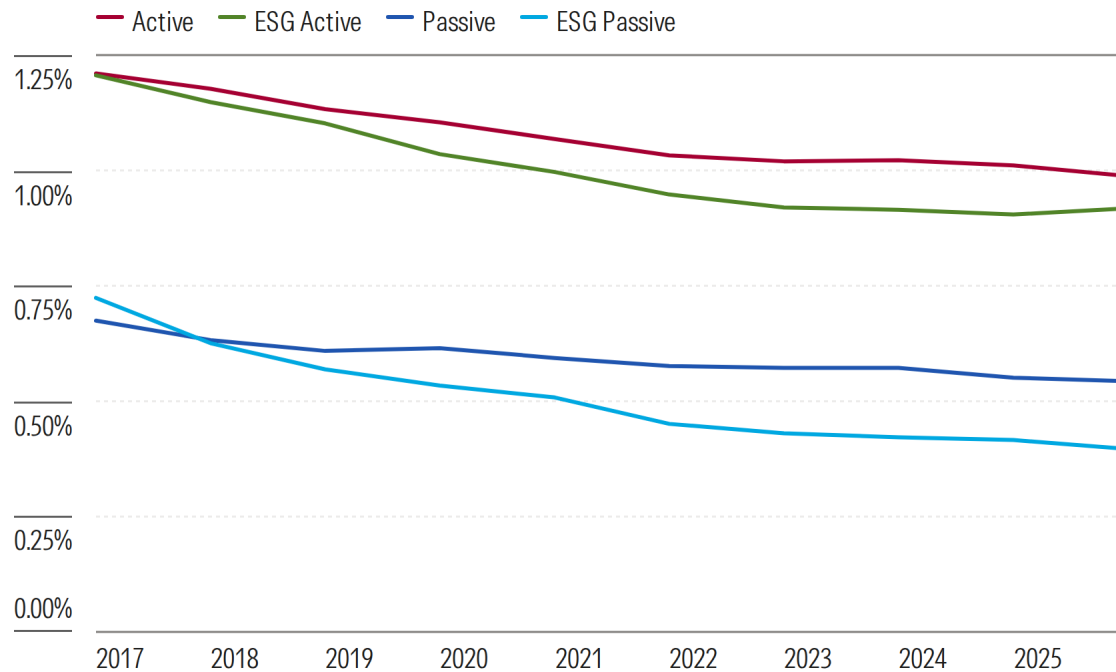
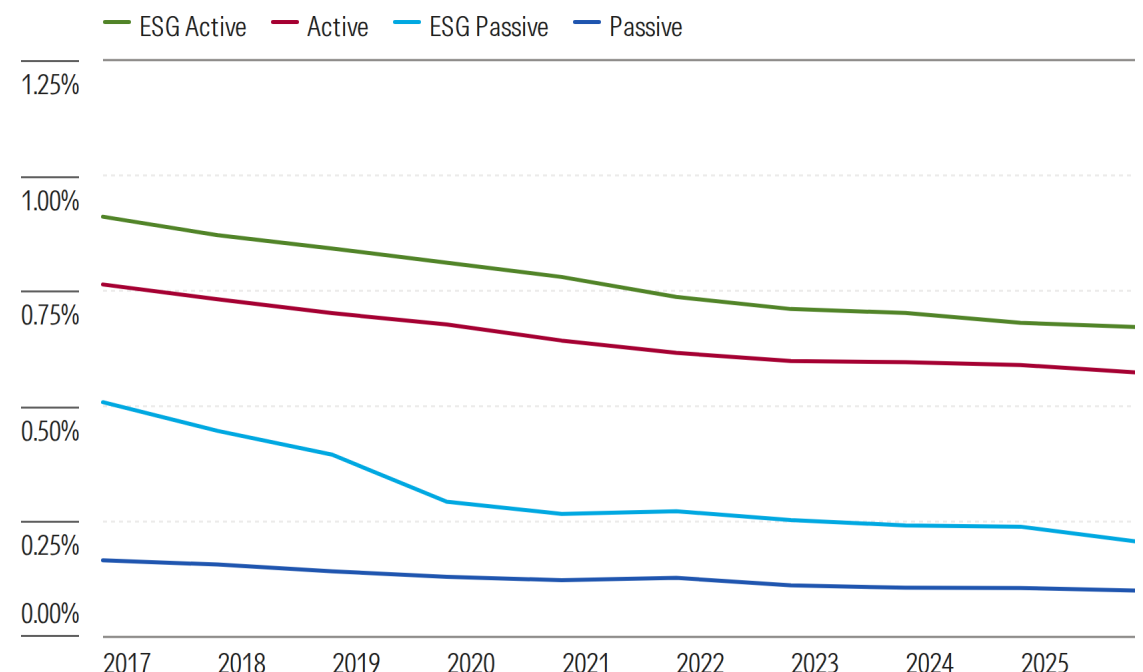


Exhibit 26 Asset-Weighted Average Fee



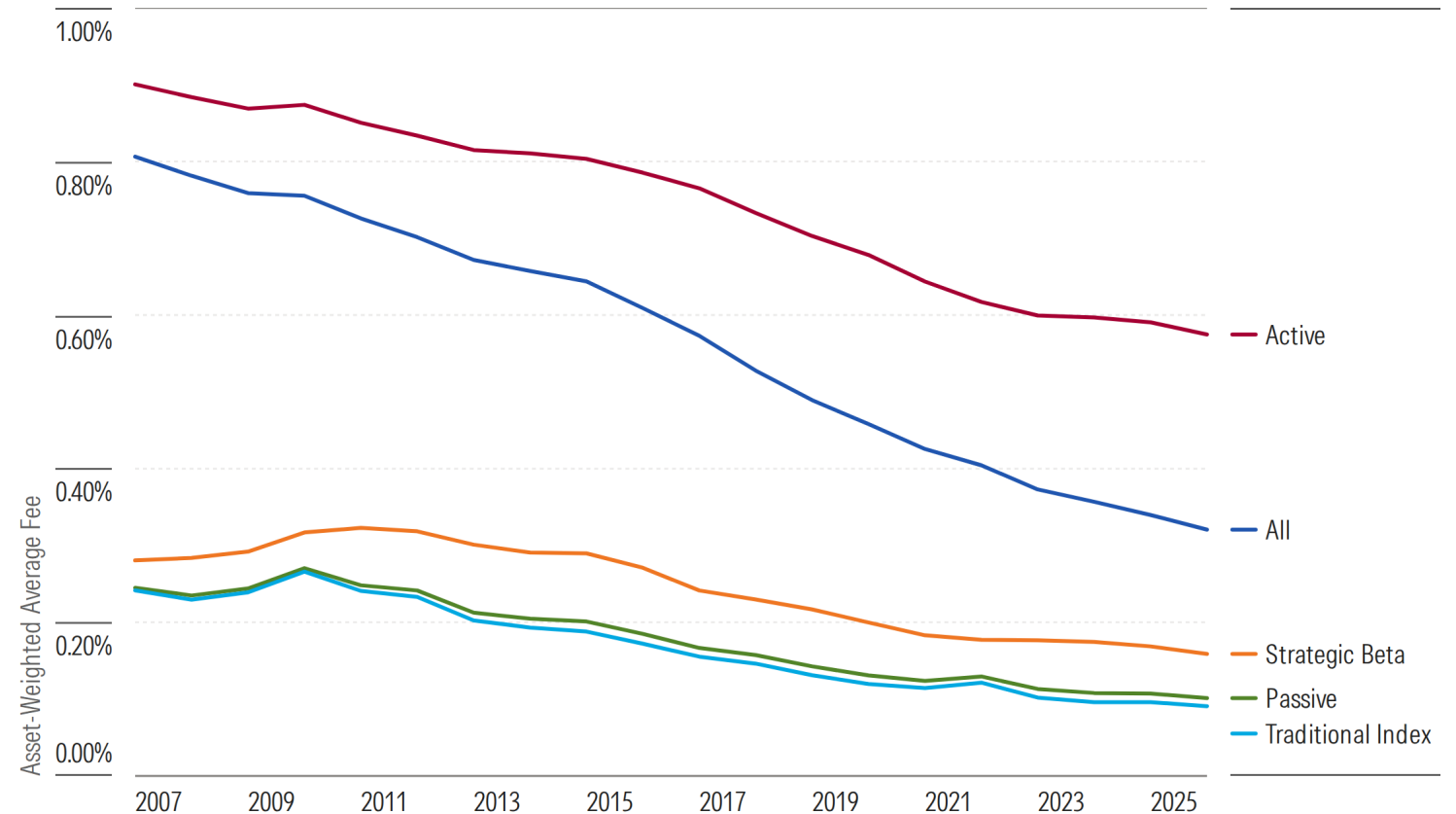
Strategic-Beta Fees

An Attempt to Marry the Best of Both Worlds

Strategic-beta funds attempt to marry the best attributes of active and passive approaches to portfolio construction. The indexes that underpin these funds attempt to codify strategies similar to those plied by active managers and deliver them in a format that is more transparent and less costly relative to most traditional actively managed funds.

At 0.16%, strategic-beta funds' asset-weighted average fee is significantly lower relative to active funds (0.57%) but reflects a premium versus their peers tracking more traditional indexes (0.09%). That said, this premium has narrowed in recent years as fee competition has spilled over from the realm of traditional index funds into strategic-beta funds.

Exhibit 27 Strategic-Beta Funds Offer a Cheaper Alternative to Active Management



Appendix

Exhibit 28 Asset-Weighted Average Fee by Morningstar Category

	Asset-Weighted Average Fees (%)				
	2021	2022	2023	2024	2025
Large Blend	0.16	0.15	0.14	0.13	0.12
Large Value	0.43	0.41	0.40	0.38	0.37
Large Growth	0.56	0.51	0.47	0.45	0.44
Mid-Cap Blend	0.24	0.24	0.21	0.19	0.18
Mid-Cap Value	0.58	0.59	0.60	0.58	0.52
Mid-Cap Growth	0.59	0.57	0.72	0.70	0.67
Small Blend	0.30	0.29	0.28	0.28	0.26
Small Value	0.55	0.52	0.50	0.49	0.46
Small Growth	0.74	0.73	0.70	0.67	0.65
Foreign Large Blend	0.25	0.24	0.23	0.23	0.21
Foreign Large Growth	0.66	0.65	0.62	0.59	0.59
Diversified Emerging Mkts	0.58	0.53	0.50	0.47	0.44
Global Large-Stock Blend	0.54	0.54	0.53	0.51	0.48
Intermediate Core Bond	0.13	0.13	0.13	0.13	0.12
Intermediate Core-Plus Bond	0.46	0.44	0.44	0.43	0.41
Short-Term Bond	0.28	0.28	0.27	0.26	0.26
Ultrashort Bond	0.27	0.25	0.21	0.21	0.20
Corporate Bond	0.22	0.20	0.22	0.18	0.19
High Yield Bond	0.56	0.56	0.56	0.52	0.52

Exhibit 29 Annual Percentage Change in Asset-Weighted Average Fee by Category

	Change in Asset-Weighted Average Fees (%)				
	2021	2022	2023	2024	2025
Large Blend	-4.2	-10.1	-2.7	-8.3	-12.3
Large Value	-4.6	-4.3	-2.6	-3.3	-4.0
Large Growth	-3.0	-8.1	-7.4	-4.3	-2.4
Mid-Cap Blend	12.8	-0.9	-12.9	-9.9	-2.8
Mid-Cap Value	-4.0	0.8	3.0	-4.1	-9.7
Mid-Cap Growth	-24.0	-2.6	25.7	-3.5	-3.7
Small Blend	-9.6	-2.4	-3.0	-1.9	-4.8
Small Value	-6.1	-4.0	-4.0	-3.2	-5.6
Small Growth	-2.2	-1.6	-3.7	-3.6	-3.5
Foreign Large Blend	-6.9	-1.9	-3.4	-1.0	-6.8
Foreign Large Growth	-1.6	-1.6	-4.7	-3.7	-0.2
Diversified Emerging Mkts	-5.6	-8.1	-5.4	-5.9	-6.2
Global Large-Stock Blend	-8.4	0.3	-1.4	-5.1	-6.1
Intermediate Core Bond	-3.8	-0.6	0.0	-2.0	-4.7
Intermediate Core-Plus Bond	-7.8	-3.9	0.8	-3.3	-3.6
Short-Term Bond	-14.9	-1.8	-2.7	-1.5	-2.4
Ultrashort Bond	-3.7	-9.9	-15.1	0.0	-4.3
Corporate Bond	-16.2	-5.5	9.8	-20.4	6.2
High Yield Bond	-4.9	0.4	-0.5	-6.9	0.1

Exhibit 30 Asset-Weighted Average Fee by Morningstar Category

	Asset-Weighted Average Fees (%)									
	Active					Passive				
	2021	2022	2023	2024	2025	2021	2022	2023	2024	2025
Large Blend	0.51	0.49	0.49	0.47	0.45	0.06	0.05	0.05	0.05	0.05
Large Value	0.57	0.56	0.56	0.55	0.52	0.16	0.15	0.14	0.14	0.12
Large Growth	0.68	0.65	0.62	0.61	0.63	0.15	0.15	0.15	0.14	0.14
Mid-Cap Blend	0.85	0.84	0.85	0.79	0.74	0.09	0.09	0.08	0.08	0.08
Mid-Cap Value	0.68	0.73	0.76	0.73	0.70	0.18	0.24	0.26	0.27	0.30
Mid-Cap Growth	0.82	0.83	0.81	0.80	0.80	0.09	0.08	0.16	0.16	0.16
Small Blend	0.72	0.73	0.72	0.71	0.68	0.10	0.10	0.10	0.10	0.10
Small Value	0.78	0.76	0.72	0.69	0.64	0.15	0.15	0.16	0.20	0.20
Small Growth	0.87	0.88	0.86	0.84	0.83	0.14	0.13	0.14	0.13	0.13
Foreign Large Blend	0.62	0.62	0.61	0.62	0.59	0.12	0.11	0.11	0.10	0.10
Foreign Large Growth	0.67	0.66	0.63	0.61	0.61	0.35	0.33	0.32	0.32	0.30
Diversified Emerging Mkts	0.84	0.80	0.77	0.74	0.72	0.21	0.20	0.19	0.18	0.16
Global Large-Stock Blend	0.66	0.68	0.67	0.65	0.63	0.19	0.19	0.18	0.17	0.16
Intermediate Core Bond	0.32	0.33	0.33	0.32	0.31	0.05	0.04	0.04	0.04	0.04
Intermediate Core-Plus Bond	0.46	0.45	0.45	0.44	0.43	0.08	0.05	0.07	0.06	0.07
Short-Term Bond	0.37	0.36	0.36	0.35	0.35	0.05	0.05	0.05	0.05	0.04
Ultrashort Bond	0.29	0.28	0.25	0.26	0.26	0.14	0.14	0.13	0.13	0.12
Corporate Bond	0.37	0.36	0.44	0.34	0.39	0.09	0.08	0.08	0.07	0.07
High Yield Bond	0.61	0.61	0.60	0.58	0.60	0.36	0.34	0.34	0.29	0.25

Exhibit 31 Annual Percentage Change in Asset-Weighted Average Fee by Category

	Change in Asset-Weighted Average Fees (%)									
	Active					Passive				
	2021	2022	2023	2024	2025	2021	2022	2023	2024	2025
Large Blend	-8.1	-2.5	-0.1	-5.0	-4.1	-3.5	-9.0	-2.1	-2.8	-0.1
Large Value	-1.2	-1.5	-0.4	-2.0	-6.0	-2.3	-6.4	-3.4	-5.0	-11.3
Large Growth	-0.8	-5.2	-5.0	-0.5	3.0	3.6	-3.1	-1.6	-3.5	-3.3
Mid-Cap Blend	-4.1	-0.9	0.7	-7.2	-5.5	8.5	-3.3	-11.9	-2.4	0.5
Mid-Cap Value	-3.1	6.2	4.6	-3.4	-5.0	-3.3	34.9	9.2	4.3	11.3
Mid-Cap Growth	-3.1	0.3	-1.5	-1.3	-0.4	-58.1	-3.9	99.2	-1.9	0.0
Small Blend	-5.1	1.1	-1.9	-0.9	-4.2	-4.4	-4.1	-1.2	-0.2	-1.4
Small Value	-5.4	-2.9	-5.4	-4.0	-6.3	1.0	0.4	9.6	22.5	-2.0
Small Growth	-2.0	0.1	-1.9	-1.7	-1.5	-1.4	-5.3	7.8	-7.6	-0.1
Foreign Large Blend	-7.1	0.7	-1.6	1.1	-4.4	1.0	-4.2	0.1	-6.9	-6.6
Foreign Large Growth	-1.1	-1.3	-4.3	-3.3	0.0	-6.2	-4.9	-2.7	0.4	-8.5
Diversified Emerging Mkts	-3.5	-4.3	-3.4	-4.6	-2.8	-11.5	-4.4	-4.6	-3.5	-11.1
Global Large-Stock Blend	-6.7	3.8	-1.0	-3.3	-3.8	-11.8	2.2	-3.4	-5.4	-5.2
Intermediate Core Bond	2.2	1.1	-0.1	-1.9	-3.4	-10.2	-3.7	-0.6	-3.5	-7.2
Intermediate Core-Plus Bond	-6.9	-3.0	1.1	-2.8	-3.5	-37.2	-32.6	34.7	-5.6	2.7
Short-Term Bond	-14.9	-1.6	-1.5	-1.1	-1.1	-6.0	-2.2	-2.3	-1.4	-13.7
Ultrashort Bond	-7.1	-5.8	-9.1	3.1	-1.6	-3.5	-2.6	-5.1	-2.0	-3.5
Corporate Bond	-17.9	-2.7	20.1	-21.0	14.0	-11.7	-5.4	-2.6	-8.1	-8.7
High Yield Bond	-4.4	0.2	-1.3	-3.4	3.4	-7.4	-3.8	-1.7	-12.8	-13.7

Exhibit 32 Equal-Weighted Average Fee by Morningstar Category

	Equal-Weighted Average Fees (%)				
	2021	2022	2023	2024	2025
Large Blend	0.81	0.79	0.80	0.76	0.73
Large Value	0.92	0.90	0.90	0.89	0.86
Large Growth	0.97	0.96	0.96	0.94	0.92
Mid-Cap Blend	0.94	0.96	0.93	0.87	0.86
Mid-Cap Value	0.98	0.97	0.98	0.96	0.94
Mid-Cap Growth	1.05	1.05	1.11	1.05	1.04
Small Blend	1.01	1.00	1.00	0.99	0.98
Small Value	1.14	1.14	1.12	1.10	1.09
Small Growth	1.18	1.17	1.16	1.15	1.14
Foreign Large Blend	0.92	0.93	0.90	0.89	0.84
Foreign Large Growth	1.05	1.05	1.02	1.00	0.97
Diversified Emerging Mkts	1.20	1.17	1.16	1.15	1.14
Global Large-Stock Blend	0.95	0.96	0.94	0.93	0.88
Intermediate Core Bond	0.59	0.59	0.59	0.56	0.55
Intermediate Core-Plus Bond	0.74	0.73	0.75	0.75	0.74
Short-Term Bond	0.67	0.66	0.65	0.63	0.62
Ultrashort Bond	0.43	0.42	0.40	0.40	0.38
Corporate Bond	0.70	0.66	0.68	0.62	0.61
High Yield Bond	0.91	0.89	0.90	0.88	0.87

Exhibit 33 Annual Percentage Change in Equal-Weighted Average Fee by Category

	Change in Equal-Weighted Average Fees (%)				
	2021	2022	2023	2024	2025
Large Blend	-3.4	-2.8	1.5	-4.5	-3.9
Large Value	-1.4	-2.1	0.0	-1.3	-3.6
Large Growth	-4.6	-1.1	-0.1	-1.9	-1.4
Mid-Cap Blend	-2.4	1.9	-2.9	-6.3	-1.5
Mid-Cap Value	-5.4	-0.9	0.6	-1.8	-2.3
Mid-Cap Growth	-4.7	-0.2	5.5	-5.2	-0.6
Small Blend	-4.8	-0.8	0.4	-1.3	-1.3
Small Value	-1.9	-0.1	-1.9	-1.7	-1.2
Small Growth	-1.2	-0.9	-0.5	-1.5	-0.9
Foreign Large Blend	-0.1	0.7	-2.8	-2.1	-4.7
Foreign Large Growth	-2.5	0.1	-2.3	-2.5	-2.6
Diversified Emerging Mkts	-3.0	-2.4	-0.7	-1.5	-0.8
Global Large-Stock Blend	-4.9	1.0	-1.9	-1.1	-5.4
Intermediate Core Bond	-4.2	-0.2	-0.8	-4.0	-2.6
Intermediate Core-Plus Bond	-3.5	-0.9	2.8	0.5	-1.2
Short-Term Bond	-2.9	-1.5	-0.6	-4.0	-1.3
Ultrashort Bond	-2.0	-2.2	-4.1	-0.9	-3.5
Corporate Bond	-4.8	-4.9	2.0	-8.3	-1.1
High Yield Bond	-2.7	-2.9	1.6	-2.5	-1.1

Exhibit 34 Equal-Weighted Average Fee by Morningstar Category

	Equal-Weighted Average Fees (%)									
	Active					Passive				
	2021	2022	2023	2024	2025	2021	2022	2023	2024	2025
Large Blend	0.93	0.90	0.92	0.88	0.86	0.39	0.38	0.35	0.35	0.32
Large Value	0.98	0.95	0.96	0.95	0.91	0.46	0.45	0.44	0.44	0.38
Large Growth	1.00	0.99	1.00	0.98	0.97	0.61	0.60	0.58	0.54	0.54
Mid-Cap Blend	1.14	1.13	1.12	1.08	1.04	0.39	0.42	0.38	0.36	0.35
Mid-Cap Value	1.03	1.03	1.03	1.03	1.01	0.45	0.45	0.45	0.37	0.37
Mid-Cap Growth	1.10	1.10	1.14	1.09	1.08	0.50	0.47	0.57	0.56	0.57
Small Blend	1.13	1.13	1.12	1.11	1.09	0.44	0.41	0.41	0.43	0.43
Small Value	1.18	1.19	1.16	1.16	1.15	0.66	0.60	0.64	0.63	0.63
Small Growth	1.20	1.19	1.18	1.17	1.16	0.62	0.68	0.65	0.48	0.48
Foreign Large Blend	1.05	1.04	1.02	1.01	0.97	0.37	0.35	0.34	0.30	0.28
Foreign Large Growth	1.07	1.07	1.05	1.02	1.00	0.44	0.46	0.42	0.46	0.47
Diversified Emerging Mkts	1.29	1.26	1.25	1.23	1.23	0.41	0.41	0.41	0.44	0.38
Global Large-Stock Blend	1.02	1.03	1.01	1.01	0.96	0.38	0.34	0.32	0.32	0.35
Intermediate Core Bond	0.65	0.65	0.64	0.62	0.60	0.24	0.23	0.24	0.21	0.19
Intermediate Core-Plus Bond	0.74	0.73	0.75	0.76	0.75	0.16	0.27	0.29	0.33	0.32
Short-Term Bond	0.70	0.69	0.68	0.66	0.65	0.12	0.12	0.12	0.12	0.12
Ultrashort Bond	0.44	0.44	0.42	0.42	0.41	0.12	0.11	0.11	0.11	0.11
Corporate Bond	0.78	0.76	0.76	0.71	0.71	0.21	0.14	0.16	0.16	0.17
High Yield Bond	0.95	0.94	0.95	0.92	0.91	0.40	0.35	0.33	0.30	0.30

Exhibit 35 Annual Percentage Change in Equal-Weighted Average Fee by Category

	Change in Equal-Weighted Average Fees (%)									
	Active					Passive				
	2021	2022	2023	2024	2025	2021	2022	2023	2024	2025
Large Blend	-3.9	-2.4	1.5	-3.9	-2.4	-1.8	-2.9	-6.6	-1.7	-8.6
Large Value	-1.6	-2.3	0.4	-1.2	-3.4	0.8	-2.7	-2.7	0.5	-13.7
Large Growth	-4.0	-0.8	0.2	-1.8	-1.1	-8.9	-0.7	-3.3	-6.4	-1.0
Mid-Cap Blend	-1.9	-1.0	-0.5	-3.3	-3.9	-0.2	8.9	-9.7	-5.1	-2.7
Mid-Cap Value	-3.6	-0.5	0.5	-0.4	-1.5	-29.0	-1.5	0.1	-18.0	1.0
Mid-Cap Growth	-2.9	0.2	3.8	-5.1	-0.8	-18.8	-5.1	20.0	-1.2	1.9
Small Blend	-3.7	-0.3	-0.5	-1.4	-1.1	-5.5	-7.3	1.6	5.1	-0.4
Small Value	-1.7	0.5	-2.2	-0.6	-0.9	-8.0	-9.4	6.7	-1.4	0.4
Small Growth	-1.0	-1.4	-0.2	-1.2	-0.8	-4.0	9.1	-4.1	-25.7	-0.9
Foreign Large Blend	-1.0	-0.3	-2.2	-0.6	-3.8	-0.9	-4.2	-2.6	-13.2	-4.9
Foreign Large Growth	-2.2	0.0	-2.3	-2.5	-2.4	2.4	4.9	-8.8	10.1	1.0
Diversified Emerging Mkts	-2.9	-2.3	-0.8	-1.3	0.1	-5.9	-1.0	1.7	5.9	-12.4
Global Large-Stock Blend	-4.0	1.1	-2.0	-0.7	-4.4	-11.4	-8.5	-7.6	-0.5	9.9
Intermediate Core Bond	-4.3	-0.3	-2.1	-3.3	-2.3	-12.0	-2.9	6.2	-15.4	-9.2
Intermediate Core-Plus Bond	-3.4	-0.9	2.8	0.2	-1.1	-12.3	66.1	9.1	14.5	-3.6
Short-Term Bond	-3.1	-1.6	-0.6	-3.3	-1.2	4.7	0.6	-3.1	0.7	-1.3
Ultrashort Bond	-1.5	-1.7	-3.3	-0.4	-2.5	-3.8	-8.3	-1.0	0.3	1.0
Corporate Bond	-3.5	-3.1	0.5	-7.0	-0.7	-3.2	-33.3	12.2	0.8	8.2
High Yield Bond	-2.5	-1.9	1.3	-3.0	-1.2	-2.2	-13.1	-3.7	-8.7	-0.1

Exhibit 36 Asset-Weighted Average Fee by Service-Fee Arrangement

	Asset-Weighted Average Fees (%)														
	Bundled					Semibundled					Unbundled				
	2021	2022	2023	2024	2025	2021	2022	2023	2024	2025	2021	2022	2023	2024	2025
U.S. Equity	0.87	0.85	0.84	0.82	0.80	0.40	0.36	0.34	0.32	0.30	0.12	0.11	0.11	0.10	0.10
Sector Equity	0.45	0.40	0.37	0.34	0.33	0.61	0.60	0.60	0.59	0.56	0.18	0.17	0.18	0.18	0.16
International Equity	0.95	0.94	0.93	0.90	0.87	0.55	0.52	0.49	0.47	0.44	0.22	0.22	0.21	0.20	0.18
Nontraditional Equity	1.34	1.28	1.30	1.27	1.39	0.95	0.86	0.76	0.76	0.79	0.78	0.61	0.39	0.33	0.33
Taxable Bond	0.79	0.79	0.79	0.79	0.76	0.36	0.34	0.33	0.33	0.31	0.17	0.16	0.17	0.19	0.17
Muni Bond	0.77	0.75	0.80	0.87	0.84	0.44	0.42	0.42	0.45	0.42	0.14	0.13	0.13	0.13	0.12
Allocation	0.80	0.78	0.78	0.76	0.75	0.57	0.57	0.57	0.55	0.54	0.19	0.19	0.20	0.21	0.21
Alternative	1.65	1.64	1.65	1.78	1.93	1.33	1.31	1.38	1.45	1.56	0.93	1.17	1.55	1.81	1.61
Commodities	1.16	1.15	1.25	1.22	1.14	0.56	0.66	0.67	0.65	0.64	0.67	0.63	0.80	0.76	0.61
Miscellaneous	1.02	1.02	1.35	1.39	1.37	0.96	0.94	0.94	0.99	0.99	0.72	0.64	0.72	0.78	0.79
All Funds	0.82	0.79	0.79	0.77	0.75	0.45	0.42	0.41	0.39	0.37	0.15	0.14	0.14	0.14	0.13

Exhibit 37 Annual Percentage Change in Asset-Weighted Average Fee

	Change in Asset-Weighted Average Fees (%)														
	Bundled					Semibundled					Unbundled				
	2021	2022	2023	2024	2025	2021	2022	2023	2024	2025	2021	2022	2023	2024	2025
U.S. Equity	-3.0	-2.6	-0.7	-2.5	-2.8	-5.4	-8.6	-6.6	-6.9	-5.4	1.2	-9.5	-1.2	-5.5	-5.9
Sector Equity	-14.8	-11.2	-6.5	-7.8	-3.8	-3.5	-1.8	0.9	-2.7	-4.9	-8.8	-3.8	5.3	-0.3	-9.9
International Equity	-3.7	-2.0	-0.4	-3.3	-3.4	-4.5	-5.9	-5.4	-4.5	-5.4	1.9	0.6	-4.8	-6.0	-10.1
Nontraditional Equity	-7.6	-4.4	1.1	-2.2	9.5	-14.8	-9.7	-11.0	-1.2	4.5	-19.1	-22.2	-35.9	-14.1	-1.1
Taxable Bond	-8.0	-0.4	0.0	0.8	-3.9	-5.5	-5.4	-3.8	-0.8	-3.5	-21.6	-5.8	6.7	9.4	-11.3
Muni Bond	-2.6	-2.4	6.7	8.5	-3.0	-1.6	-4.1	1.4	5.4	-5.5	-1.6	-0.9	0.0	-3.2	-4.8
Allocation	-3.0	-2.3	-0.2	-2.4	-2.0	-3.5	-0.9	-0.3	-2.6	-2.9	0.1	3.0	2.9	3.0	0.8
Alternative	-2.1	-0.4	0.4	7.7	8.6	-10.8	-1.8	5.5	4.8	7.7	-11.6	26.3	31.8	16.6	-11.0
Commodities	-19.4	-1.0	8.8	-1.9	-7.0	6.7	17.3	2.4	-4.0	-1.6	-30.0	-6.3	26.2	-4.6	-19.5
Miscellaneous	-11.2	0.6	31.9	3.2	-1.3	-2.6	-2.0	0.9	4.5	0.8	-33.9	-11.1	12.5	8.2	1.5
All Funds	-4.8	-3.4	0.1	-1.9	-3.2	-4.5	-5.8	-4.4	-4.5	-4.0	-8.0	-6.5	0.5	-2.8	-8.4

Exhibit 38 Equal-Weighted Average Fee by Service Fee Arrangement

	Equal-Weighted Average Fees (%)														
	Bundled					Semibundled					Unbundled				
	2021	2022	2023	2024	2025	2021	2022	2023	2024	2025	2021	2022	2023	2024	2025
U.S. Equity	1.33	1.32	1.33	1.32	1.31	0.71	0.71	0.71	0.69	0.68	0.56	0.56	0.56	0.57	0.57
Sector Equity	1.55	1.53	1.56	1.59	1.54	0.75	0.74	0.75	0.76	0.73	0.63	0.63	0.66	0.72	0.64
International Equity	1.46	1.45	1.41	1.42	1.39	0.81	0.81	0.81	0.79	0.78	0.73	0.75	0.72	0.72	0.69
Nontraditional Equity	1.88	1.84	1.83	1.89	1.81	1.09	1.06	1.00	0.95	0.95	0.99	0.98	0.96	0.98	0.95
Taxable Bond	1.15	1.13	1.15	1.14	1.14	0.53	0.52	0.53	0.52	0.51	0.42	0.43	0.46	0.48	0.47
Muni Bond	1.06	1.05	1.07	1.06	1.05	0.50	0.50	0.51	0.50	0.50	0.43	0.41	0.44	0.40	0.40
Allocation	1.36	1.37	1.37	1.36	1.34	0.79	0.79	0.80	0.80	0.78	0.58	0.59	0.60	0.59	0.60
Alternative	2.05	1.98	1.98	2.10	2.13	1.43	1.43	1.41	1.50	1.53	1.17	1.18	1.28	1.40	1.49
Commodities	1.47	1.46	1.46	1.49	1.40	0.80	0.79	0.79	0.75	0.71	0.65	0.64	0.70	0.70	0.68
Miscellaneous	1.83	1.82	1.93	1.91	1.92	1.11	1.04	1.12	1.11	1.11	0.72	0.64	0.72	0.86	0.84
All Funds	1.34	1.33	1.33	1.34	1.32	0.71	0.71	0.71	0.70	0.69	0.56	0.57	0.58	0.59	0.57

Exhibit 39 Annual Percent Change in Equal-Weighted Average Fee

	Change in Equal-Weighted Average Fees (%)														
	Bundled					Semibundled					Unbundled				
	2021	2022	2023	2024	2025	2021	2022	2023	2024	2025	2021	2022	2023	2024	2025
U.S. Equity	-1.9	-0.3	0.5	-1.1	-0.8	-3.5	-0.6	0.4	-3.0	-1.7	-0.3	0.8	0.0	1.3	-0.4
Sector Equity	-2.0	-1.2	1.9	2.2	-3.4	-3.0	-1.6	2.1	1.2	-4.6	-2.4	1.2	3.3	9.4	-10.8
International Equity	-2.1	-0.8	-2.5	0.4	-1.7	-3.0	0.2	0.1	-3.0	-0.7	-2.2	2.4	-3.9	-0.2	-3.7
Nontraditional Equity	-3.7	-2.4	-0.1	2.9	-4.0	-10.9	-2.8	-6.0	-5.0	-0.1	-6.9	-0.5	-2.5	2.4	-3.0
Taxable Bond	-2.1	-1.1	1.2	-0.4	-0.7	-5.9	-1.9	1.9	-2.7	-1.6	-9.3	2.5	6.9	5.0	-1.7
Muni Bond	-1.8	-1.1	1.6	-0.4	-1.0	-3.6	-0.7	2.8	-1.1	-1.5	-0.8	-3.5	6.1	-7.3	-0.9
Allocation	-0.4	1.0	-0.1	-0.4	-1.9	-1.8	0.1	1.1	1.0	-2.5	-4.1	1.3	1.2	-0.8	1.8
Alternative	-1.5	-2.9	-0.1	5.9	1.4	-5.6	-0.4	-1.3	6.3	2.3	-3.2	0.6	8.3	9.6	6.7
Commodities	-5.7	-1.0	0.4	2.1	-6.3	-7.3	-1.8	1.0	-5.1	-6.5	-11.5	-2.0	9.7	0.6	-2.4
Miscellaneous	-5.5	-0.6	5.7	-1.1	1.0	-0.1	-6.3	7.7	-0.9	0.2	-33.9	-11.1	12.5	18.8	-1.8
All Funds	-2.1	-0.7	0.3	0.0	-1.2	-4.0	-0.7	0.9	-1.6	-1.7	-3.6	1.0	1.3	1.5	-2.3

Methodology

Methodology for US Fund Fee Study

- Most of the data for this report is compiled using the US Fund Fee Trends Interactive Research available via the Research + Analytics module in Morningstar Direct.
- Data for report exhibits not replicable via the notebook is sourced from the US Funds Database in Morningstar Direct. Fund of funds, feeder funds, and money market funds are excluded.
- Fee data for the report and the notebook is collected using a share class' annual report net expense ratio. A share class' annual report net expense ratio is defined as the percentage of fund assets used to pay for operating expenses and management fees, including 12b-1 fees, administrative fees, and all other asset-based costs incurred by the fund, except brokerage costs. Fund expenses are reflected in the fund's net asset value. Sales charges are not included in the expense ratio. It is collected on the publish date of each fund's annual report and is applied to the prior year.
- Asset-weighted average fees are a weighted average of the annual report net expense ratio for all share classes in the US Funds Database each year. The calculated weighted average is based on share class assets under management for a given year.
- Equal-weighted average fees are a simple average of the annual report net expense ratio for all share classes in the US funds database each year.
- Additional data definitions can be found in Morningstar Direct.

General Disclosure

"Morningstar" is used throughout this section to refer to Morningstar, Inc., and/or its affiliates, as applicable. Unless otherwise provided in a separate agreement, recipients of this report may only use it in the country in which the Morningstar distributor is based. Unless stated otherwise, the original distributor of the report is Morningstar Research Services LLC, a USA-domiciled financial institution.

This report is for informational purposes only, should not be the sole piece of information used in making an investment decision, and has no regard to the specific investment objectives, financial situation, or particular needs of any specific recipient. This publication is intended to provide information to assist investors in making their own investment decisions, not to provide investment advice to any specific investor. Therefore, investments discussed and recommendations made herein may not be suitable for all investors; recipients must exercise their own independent judgment as to the suitability of such investments and recommendations in the light of their own investment objectives, experience, taxation status, and financial position.

The information, data, analyses, and opinions presented herein are not warranted to be accurate, correct, complete, or timely. Unless otherwise provided in a separate agreement, neither Morningstar, Inc., nor the Research Group represents that the report contents meet all of the presentation and/or disclosure standards applicable in the jurisdiction the recipient is located.

Except as otherwise required by law or provided for in a separate agreement, the analyst, Morningstar, Inc., and the Research Group and their officers, directors, and employees shall not be responsible or liable for any trading decisions, damages, or other losses resulting from, or related to, the information, data, analyses, or opinions within the report. The Research Group encourages recipients of this report to read all relevant issue documents—a prospectus, for example—pertaining to the security concerned, including without limitation, information relevant to its investment objectives, risks, and costs before making an investment decision and, when deemed necessary, to seek the advice of a legal, tax, and/or accounting professional.

The report and its contents are not directed to, or intended for distribution to or use by, any person or entity who is a citizen or resident of or located in any locality, state, country, or other jurisdiction where such distribution, publication, availability, or use would be contrary to law or regulation or that would subject Morningstar, Inc., or its affiliates to any registration or licensing requirements in such jurisdiction.

Where this report is made available in a language other than English and in the case of inconsistencies between the English and translated versions of the report, the English version will control and supersede any ambiguities associated with any part or section of a report that has been issued in a foreign language. Neither the analyst, Morningstar, Inc., nor the Research Group guarantees the accuracy of the translations.

This report may be distributed in certain localities, countries, and/or jurisdictions ("territories") by independent third parties or independent intermediaries and/or distributors ("distributors"). Such distributors are not acting as agents or representatives of the analyst, Morningstar, Inc., or the Research Group. In territories where a distributor distributes our report, the distributor is solely responsible for complying with all applicable regulations, laws, rules, circulars, codes, and guidelines established by local and/or regional regulatory bodies, including laws in connection with the distribution of third-party research reports.

Risk Warning

Please note that investments in securities are subject to market and other risks and there is no assurance or guarantee that the intended investment objectives will be achieved. Past performance of a security may or may not be sustained in future and is no indication of future performance. A security investment return and an investor's principal value will fluctuate so that, when redeemed, an investor's shares may be worth more or less than their original cost.

A security's current investment performance may be lower or higher than the investment performance noted within the report. Morningstar's Uncertainty Rating serves as a useful data point with respect to sensitivity analysis of the assumptions used in our determining a fair value price.

Conflicts of Interest

- ▶ No material interests are held by the analyst or their immediate family with respect to the securities subject of this investment research report.
- ▶ In general, Morningstar will not hold a material interest in the security subject of this report. If a material interest is held by Morningstar, or if Morningstar owns a net long or short position in the security that is the subject of this report that exceeds 0.5% of the total issued share capital of the security, it will be disclosed at <https://www.morningstar.com/company/disclosures/holdings>.
- ▶ Morningstar employees' compensation is derived from Morningstar, Inc.'s overall earnings and consists of salary, bonus, and in some cases, restricted stock. Morningstar's overall earnings are generated in part by the activities of the Investment Management and Research groups, and other affiliates, that provide services to product issuers.
- ▶ Neither Morningstar, Inc., nor its analysts receive commissions, compensation, or other material benefits from product issuers or third parties in connection with this report.
- ▶ Morningstar's overall earnings are generated in part by the activities of the Investment Management and Research groups, and other affiliates, who provide services to product issuers. Morningstar does not receive commissions for providing research and does not charge issuers to be rated.
- ▶ Morningstar employees may not pursue business or employment opportunities outside Morningstar within the investment industry (including, but not limited to, working as a financial planner, an investment professional or investment professional representative, a broker/dealer or broker/dealer agent, a financial writer, reporter, or analyst) without the approval of Morningstar's Legal and, if applicable, Compliance teams.
- ▶ Certain managed investments use an index created by and licensed from Morningstar, Inc. as their tracking index. We mitigate any actual or potential conflicts of interests resulting from that by not producing qualitative analysis on any such managed investment as well as imposing information barriers (both technology and no-technology) where appropriate and monitoring by the compliance department.
- ▶ Neither Morningstar, Inc., nor the Research Group is a market maker or a liquidity provider of the securities noted within this report.
- ▶ Neither Morningstar, Inc., nor the Research Group has been a lead manager or co-lead manager over the previous 12 months of any publicly disclosed offer of financial instruments of the issuer.
- ▶ Morningstar, Inc.'s Investment Management group has arrangements with financial institutions to provide portfolio management/investment advice, some of which an analyst may issue investment research reports on. In addition, the Investment Management group creates and maintains model portfolios whose underlying holdings can include financial products, including securities that may be the subject of this report. However, analysts do not have authority over Morningstar's Investment Management group's business arrangements or allow employees from the Investment Management group to participate or influence the analysis or opinion prepared by them.
- ▶ Morningstar, Inc., is a publicly traded company (ticker: MORN) and thus a financial institution the security of which is the subject of this report may own more than 5% of Morningstar, Inc.'s total outstanding shares. Please access Morningstar, Inc.'s proxy statement, section "Security Ownership of Certain Beneficial Owners and Management," at <https://shareholders.morningstar.com/investor-relations/financials/sec-filings/default.aspx>. A security's holding of Morningstar stock has no bearing on and is not a requirement for which securities Morningstar determines to cover.

Morningstar, Inc. may provide the product issuer or its related entities with services or products for a fee and on an arm's-length basis, including software products and licenses, research and consulting services, data services, licenses to republish our ratings and research in their promotional material, event sponsorship, and website advertising.

Further information on Morningstar's conflict-of-interest policies is available at <http://global.morningstar.com/equitydisclosures>. Please note analysts are subject to the CFA Institute's Code of Ethics and Standards of Professional Conduct.

For a list of securities the Research Group currently covers and provides written analysis on, or for

historical analysis of covered securities, including fair value estimates, please contact your local Morningstar office. Morningstar Research methodologies can be found at [Investor Relations | Morningstar, Inc.](#)

For current Morningstar clients, please reach out to your respective Client Success Manager for more information on how you can best leverage this research within your firm. For all others, please reach out to our business development team at dainsidesales@morningstar.com to learn more about Morningstar's various offerings and more details about how you can leverage this research.

For recipients in Australia: This report has been issued and distributed in Australia by Morningstar Australasia Pty. Ltd. (ABN: 95 090 665 544; ASFL: 240892). Morningstar Australasia Pty. Ltd. is the provider of the general advice ("the service") and takes responsibility for the production of this report. The service is provided through the research of investment products. To the extent the report contains general advice, it has been prepared without reference to an investor's objectives, financial situation, or needs. Investors should consider the advice in light of these matters and, if applicable, the relevant Product Disclosure Statement before making any decision to invest. Refer to our Financial Services Guide for more information at <http://www.morningstar.com.au/s/fsg.pdf>.

For recipients in New Zealand: This report has been issued and distributed by Morningstar Australasia Pty Ltd and/or Morningstar Research Ltd (together "Morningstar"). This report has been prepared and is intended for distribution in New Zealand to wholesale clients only and has not been prepared for use by New Zealand retail clients (as those terms are defined in the Financial Markets Conduct Act 2013).

The information, views, and any recommendations in this material are provided for general information purposes only, and solely relate to the companies and investment opportunities specified within. Our reports do not take into account any particular investor's financial situation, objectives, or appetite for risk, meaning no representation may be implied as to the suitability of any financial product mentioned for any particular investor. We recommend seeking financial advice before making any investment decision.

For recipients in Canada: This research is not prepared subject to Canadian disclosure requirements.

For recipients in Europe: This report is distributed by Morningstar Holland B.V., a wholly owned subsidiary of Morningstar, Inc. Morningstar Holland B.V. is not required to be regulatory by the European Securities and Markets Authority for the provision of investment research data. The analyst/s involved in the creation of the report do not take into account any particular investor's financial situation, objectives, or appetite for risk, meaning no representation may be implied as to the suitability of any financial product mentioned for any particular investor. Registered address: Haaksbergweg 58, 9th Floor, 1101 BZ Amsterdam, North Holland, Netherlands.

Continued on next page.

General Disclosure Continued

For recipients in India: This report is issued by Morningstar Investment Research India Private Limited (formerly known as Morningstar Investment Adviser India Private Limited). Morningstar Investment Research India Private Limited is registered with SEBI as an Investment Adviser (Registration number INA000001357), as a Portfolio Manager (Registration number INP000006156) and as a Research Entity (Registration Number INH000008686). Morningstar Investment Research India Private Limited has not been the subject of any disciplinary action by SEBI or any other legal/regulatory body. Morningstar Investment Research India Private Limited is a wholly owned subsidiary of Morningstar Investment Management LLC. In India, Morningstar Investment Research India Private Limited has one associate, Morningstar India Private Limited, which provides data related services, financial data analysis, and software development. The Research Analyst has not served as an officer, director, or employee of the fund company within the last 12 months, nor has it or its associates engaged in market making activity for the fund company.

For Recipients in Hong Kong: The report is distributed by Morningstar Investment Management Asia Limited, which is regulated by the Hong Kong Securities and Futures Commission to provide investment research and investment advisory services to professional investors only. Neither Morningstar Investment Management Asia Limited, nor its representatives, are acting or will be deemed to be acting as an investment advisor to any recipients of this information unless expressly agreed to by Morningstar Investment Management Asia Limited.

For Recipients in Japan: This report is distributed by Morningstar Japan, Inc. for informational purposes only. Neither Morningstar Japan, Inc. nor its representatives are acting or will be deemed to be acting as an investment advisor to any recipients of this information.

For recipients in Korea: The report is distributed by Morningstar Korea Ltd., which has filed to Financial Supervisory Service, for informational purposes only. Neither Morningstar Korea Ltd., nor its representatives, are acting or will be deemed to be acting as an investment advisor to any recipients of this information.

For recipients in Singapore: This report is distributed by Morningstar Investment Adviser Singapore Pte Limited, which is licensed and regulated by the Monetary Authority of Singapore to provide financial advisory services in Singapore. Recipients of this report should contact their financial advisor in Singapore in relation to this report. Morningstar, Inc., and its affiliates rely on certain exemptions (Financial Advisers Regulations, Section 27(1)(e), Section 32, Band 32C) to provide its investment research to recipients in Singapore.

For recipients in the United Kingdom: This report is distributed by Morningstar UK Ltd, a wholly owned subsidiary of Morningstar, Inc. Morningstar UK Ltd. is not required to be registered nor authorized by the Financial Conduct Authority for the distribution of investment research data. The analyst/s involved in the creation of the report do not take into account any particular investor's financial situation, objectives, or appetite for risk, meaning no representation may be implied as to the suitability of any financial product mentioned for any particular investor. There are information barriers in place between Morningstar UK Ltd and Morningstar regulated entities based in the UK. Registered address: 1 Oliver's Yard 55-71 City Road London EC1Y 1HQ.



22 West Washington Street
Chicago, IL 60602 USA

About Morningstar Manager Research

Morningstar's global manager research team conducts objective, qualitative analysis of managed investment strategies such as mutual funds and exchange-traded funds. Manager research analysts express their views through the Morningstar Medalist Rating, which takes the form of Gold, Silver, Bronze, Neutral, or Negative. The analysts arrive at a strategy's Medalist Rating by assessing key areas including its management team and supporting resources (People Pillar), its investment approach and rationale (Process Pillar), and the investment organization backing the strategy concerned (Parent Pillar). The analysts juxtapose those assessments with the strategy's cost in arriving at a final Analyst Rating, which expresses their conviction in the strategy's ability to outperform a relevant benchmark index or category peers over a market cycle, adjusted for risk. The Morningstar Medalist Rating methodology is forward-looking in nature and applied consistently across geographies and markets. (The Medalist Rating is an opinion, not a statement of fact, and is not intended to be nor is a guarantee of future performance.)

About Morningstar Manager Research Services

Morningstar Manager Research Services combines the firm's fund research reports, ratings, software, tools, and proprietary data with access to Morningstar's manager research analysts. It complements internal due-diligence functions for institutions such as banks, wealth managers, insurers, sovereign wealth funds, pensions, endowments, and foundations. Morningstar's manager research analysts are employed by various wholly owned subsidiaries of Morningstar, Inc. including but not limited to Morningstar Research Services LLC (USA), Morningstar UK Ltd, and Morningstar Australasia Pty Ltd.

©2025 Morningstar. All Rights Reserved. Unless otherwise provided in a separate agreement, you may use this report only in the country in which its original distributor is based. The information, data, analyses, and opinions presented herein do not constitute investment advice; are provided solely for informational purposes and therefore are not an offer to buy or sell a security; and are not warranted to be correct, complete, or accurate. The opinions expressed are as of the date written and are subject to change without notice. Except as otherwise required by law, Morningstar shall not be responsible for any trading decisions, damages, or other losses resulting from, or related to, the information, data, analyses, or opinions or their use. The information contained herein is the proprietary property of Morningstar and may not be reproduced, in whole or in part, or used in any manner, without the prior written consent of Morningstar. To order reprints, call +1 312-696-6100. To license the research, call +1 312 696-6869.